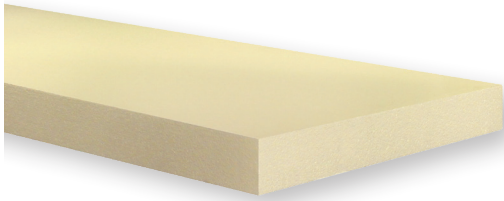


PERIMETER INSULATION

Version 01/2025



Technical information

Denomination	EPS-DIN-EN 13163-T1-L1-W1-S1P4-BS200-DS(23,90)1-CS(10)150-DS(N)2-DLT(2)5-WL(T)5-WD(V)15
German general type approval	Z-23.33-1223
Specification	EPS 035 PW
Rated value of thermal conductivity λ	0.035 [W/(mK)]
Reaction to fire according to DIN EN 13501	E
Construction material class according to DIN 4102	B1 hardly inflammable
Compressive stress at 10% compression	150 [kPa]
Waste code according to AVV	030105, 170201

Delivery formats (standard formats)

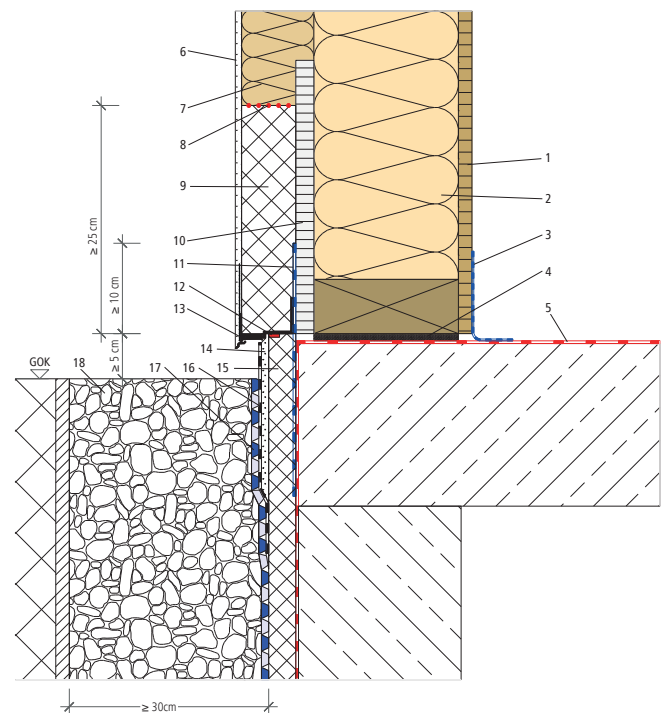
Edge formats	Stump
Thickness	40, 60, 80, 100, 120, 140, 160, 180, 200 mm
Length	1,000 mm
Width	500 mm

The best wood perimeter insulation board is made from high quality polystyrene. The insulation boards are particularly characterized by a high grade of accuracy and a high degree of non-shrinking. This enables an efficient and joint-free processing.



Base point

On the splash area with gravel and ≥ 5 cm distance between ground edge and lower edge of the base point.



- 1 Wood-based panel, e.g. OSB
- 2 Timber frame construction with best wood FLEX 50
- 3 Airtightness/vapor check at base
- 4 Swelling mortar bedding
- 5 Sealing according to DIN 18533-1
- 6 best wood render system
- 7 best wood WALL 180
- 8 Front sides glued with best wood FDM WALL
- 9 best wood perimeter insulation board
- 10 Cement-bound chipboard
- 11 Vertical sealing according to DIN 18533-1, e.g. sealing system of Ceresit with pre-painting BT 26 and dense ground BT 21
- 12 Joint insulation tape Illmod 15/5-10
- 13 best wood base rail
- 14 Base reinforcing mortar
- 15 Base insulation board/perimeter insulation
- 16 Mineral seal
- 17 Knob-protection film
- 18 Gravel with drainage

Please note that a structural calculation has to be done before installation. The present tables are only including guide values. All rights reserved. The technical data provided herein is subject to change. Although all of the information herein was up to date at the time of its publication, the publication of superseding information renders the old information invalid. Regional and national regulations and building law have to be fulfilled. The suitability and the details have to be checked for the intended use. best wood SCHNEIDER® GmbH shall not be held liable for any damage resulting from error or misprinting.

