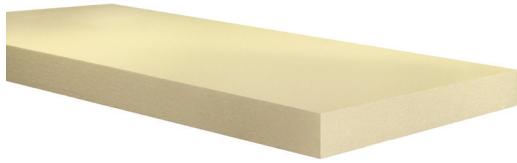


PERIMETER INSULATION

Version 05/2021



Technical information

Denomination	EPS-DIN-EN 13163-T1-L1-W1-S1P4-BS200-DS(23,90)1-CS(10)150-DS(N)2-DLT(2)5-WL(T)5-WD(V)15
German general type approval	Z-23.33-1223
Specification	EPS 035 PW
Rated value of thermal conductivity λ	0.035 [W/(mK)]
Reaction to fire according to DIN EN 13501	E
Construction material class according to DIN 4102	B1 hardly inflammable
Compressive stress at 10% compression	150 [kPa]
Waste code according to AVV	030105, 170201

Delivery formats (standard formats)

Edge formats	Stump
Thickness	40, 60, 80, 100, 120, 140, 160, 180, 200 mm
Length	1,000 mm
Width	500 mm

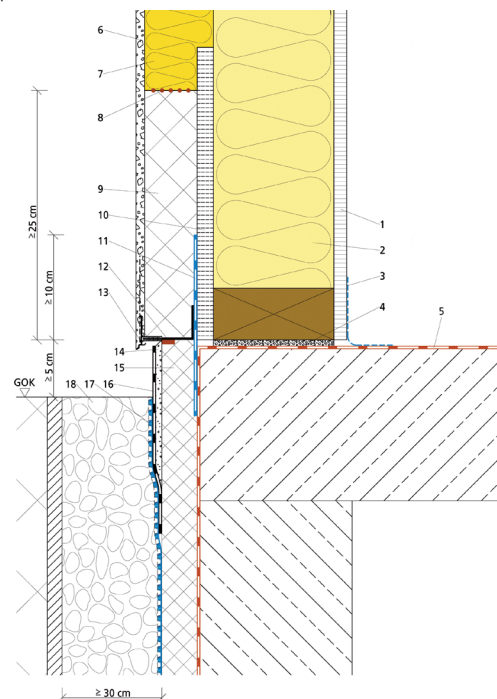
Please note that a structural calculation has to be done before installation. The present tables are only including guide values. All rights reserved. The technical data provided herein is subject to change. Although all of the information herein was up to date at the time of its publication, the publication of superseding information renders the old information invalid. Regional and national regulations and building law have to be fulfilled. The suitability and the details have to be checked for the intended use. best wood SCHNEIDER® GmbH shall not be held liable for any damage resulting from error or misprinting.

The best wood perimeter insulation board is made from high quality polystyrene. The insulation boards are particularly characterized by a high grade of accuracy and a high degree of non-shrinking. This enables an efficient and joint-free processing.



Base point

On the splash area with gravel and ≥ 5 cm distance between ground edge and lower edge of the base point.



- 1 Wood-based panel (e.g. OSB)
- 2 Frame construction with best wood FLEX 50
- 3 Air sealing/vapour barrier on the base point
- 4 Layer of swelling mortar
- 5 Horizontal sealing according to DIN 18195-4
- 6 best wood plaster system
- 7 best wood WALL 180
- 8 Front sides glued with best wood FDM WALL
- 9 best wood perimeter insulation
- 10 Cement-bound chipboard
- 11 Vertical sealing according to DIN 18195-4, e.g. sealing system of Ceresit with pre-painting BT26 and sealing membrane BT21
- 12 Joint sealing tape Illmod 15/5-10
- 13 best wood base profile
- 14 Reinforcement plaster
- 15 Base insulation board/perimeter insulation
- 16 Mineral seal
- 17 Knop-protection film
- 18 Gravel with drainage

