

*best wood* SCHNEIDER

**HELLA**

# best wood **COVER PANEL FOR WINDOW LINTELS**

Installation guidelines with HELLA sun protection shaft solutions



[www.schneider-holz.com](http://www.schneider-holz.com)

Version: January 2026



# TABLE OF CONTENTS

<b>6</b>	best wood COVER PANEL FOR WINDOW LINTELS
<b>6</b>	best wood COVER PANEL FOR WINDOW LINTELS – System partnership HELLA
<b>8</b>	Technical data of the best wood COVER PANEL FOR WINDOW LINTELS
<b>8</b>	Delivery form of best wood COVER PANEL FOR WINDOW LINTELS
<b>9</b>	Accessories
<b>10</b>	Transportation and storage
<b>10</b>	Warranty
<b>11</b>	Technical illustration
<b>12</b>	Installation instructions for the best wood COVER PANEL FOR WINDOW LINTELS
<b>13</b>	Installation brackets with cover panel for window lintels longer than 1.0 m and at the joint
<b>14</b>	Installation with joint of the best wood COVER PANEL FOR WINDOW LINTELS
<b>16</b>	Installation instructions HELLA system – Example with outdoor blind
<b>20</b>	HELLA shaft outdoor blind
<b>21</b>	HELLA shaft roller shutters
<b>22</b>	HELLA recess awning protect

## Legal notice

best wood SCHNEIDER GmbH  
Kappel 28  
88436 Eberhardzell  
Phone +49 (0)7355 9320-0  
Fax +49 (0)7355 9320-300  
E-mail [info@schneider-holz.com](mailto:info@schneider-holz.com)

Picture credits: best wood SCHNEIDER GmbH,  
Subject to technical modification. Errors excepted.

[www.schneider-holz.com](http://www.schneider-holz.com)

**Uncomplicated,  
fast &  
reliable –  
the team of best  
wood SCHNEIDER  
deals with your  
requests.**

## CONTACT

### Sales



#### Vivienne Ramsaier

Account manager | International Sales

Phone +49 (0)7355 9320 245

E-mail [vivienne.ramsaier@schneider-holz.com](mailto:vivienne.ramsaier@schneider-holz.com)

### Technical engineers support



#### Manuel Stuhlinger

B. Eng. Woodwork and wood systems

Phone +49 (0)7355 9320 209

E-mail [manuel.stuhlinger@schneider-holz.com](mailto:manuel.stuhlinger@schneider-holz.com)

# A simple solution for covering curtains for sun protection

## ■■ best wood COVER PANEL FOR WINDOW LINTELS

The pre-coated wood fiber insulation board (WALL 180) provides a simple, stable and visually appealing solution for covering curtains for sun protection, like the HELLA system. The coating is applied on three sides so that a decent and paintable rear of the COVER PANEL FOR WINDOW LINTELS is guaranteed without additional plastering of the panel. The front and bottom of the best wood COVER PANEL FOR WINDOW LINTELS is rendered with an ETICS-compliant render system.

### Take advantage of our system partnership



HELLA has developed a front mounted system with either outdoor blinds, roller shutters and vertical awnings for integration in on-site shafts. The coordination between best wood SCHNEIDER and HELLA makes the ordering process very easy for you as a customer. **Please contact HELLA in advance to receive expert advice and order-related details.**

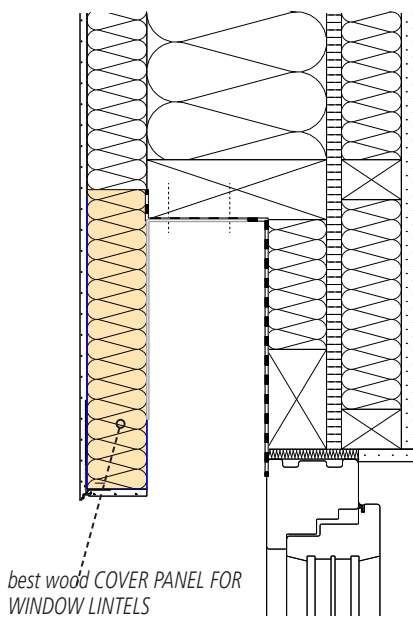
The advantages:

- HELLA shaft solutions are very easy to handle and install. They are therefore ideally suited for use in prefabrication as well as directly on the construction site.
- All common shading solutions such as outdoor blinds, roller shutters and vertical awnings are possible.
- The trades are separate. The area of sun protection can be considered independently of all others.
- HELLA shaft solutions are completely decoupled from ETICS and the box and are attached only to the window.
- This reduces noise and vibrations

■ ■ **It's that easy:**

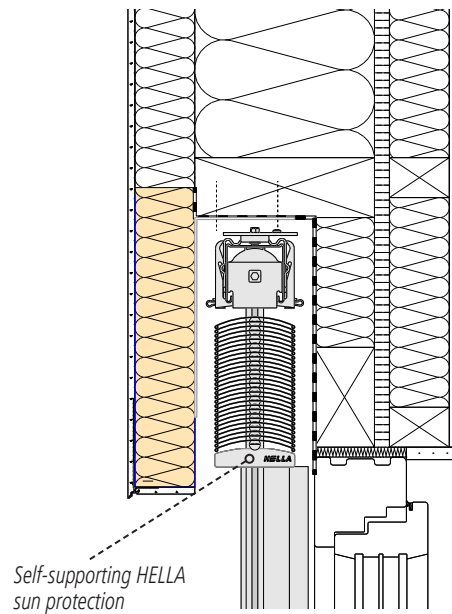
Step 1:

Manufacturing a Venetian blind cover with the best wood COVER PANEL FOR WINDOW LINTELS



Step 2:

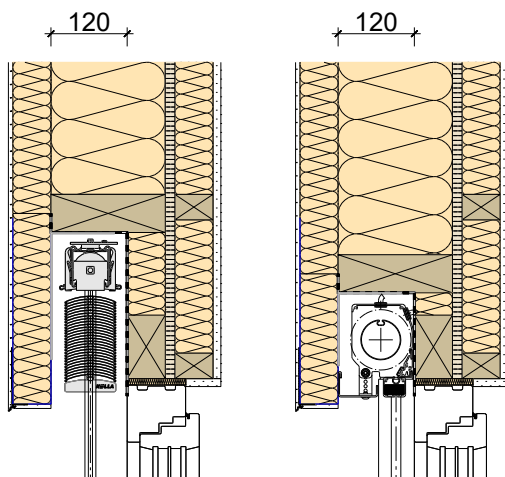
Installation of the self-supporting HELLA sun protection system in the prepared, fully rendered shaft.



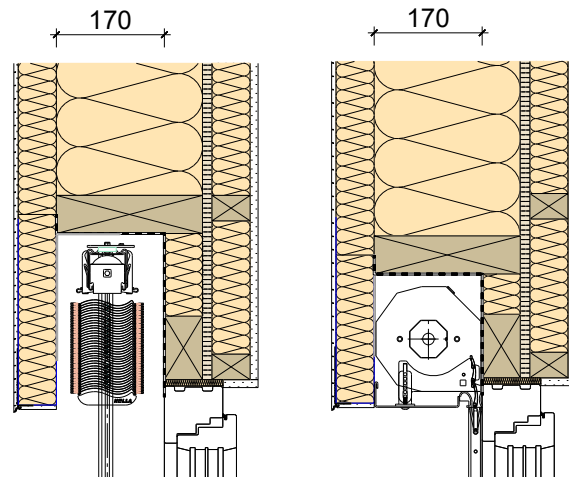
■ **Shaft solutions with consistent recess depth**

In order to simplify planning, it may be useful to plan with a consistent recess depth. The builder's wishes regarding the type of shading can thus be taken into account without having to change the detailed planning.

Example 1: Outdoor blind or screen



Example 2: Outdoor blind, screen or roller shutter



## ■ ■ Technical data of the best wood COVER PANEL FOR WINDOW LINTELS

### Characteristics of wood fiber insulation WALL 180

Denomination	WF-EN 13171-T5-DS(70,-)3-CS(10\Y)150-TR30-WS1,0-MU3-AFr100
Standard	EN13171
ETA/design approval	ETA-16/0997; aBG Z-33.84-1674
Density	180 [kg/m <sup>3</sup> ]
Nominal value of thermal conductivity $\lambda_D$	0.043 [W/(mK)]
Rated value of thermal conductivity $\lambda_B$	0.045 [W/(mK)]
Reaction to fire according to DIN EN 13501-1	E
Construction material class according to DIN 4102-1	B2
Full declaration	Wood fibers, PMDI gluing, paraffin
Production process	Dry process
Compressive stress at 10% compression	≥ 150 [kPa]
Tensile strength perpendicular to the plane of the board	≥ 30 [kPa]
Modulus of elasticity $E_{(0)}$	≥ 2,50 [N/mm <sup>2</sup> ]
Water vapor diffusion resistance $\mu$	3
Linear flow resistance	> 100 [kPa·s/m <sup>2</sup> ]
Short time water absorption	≤ 1.0 [kg/m <sup>2</sup> ]
Specific heat capacity	2100 [J/(kgK)]
Waste code according to AVV	030105, 170201 (unrendered boards); 170904 (plastered boards)

### Coating

Color	White
Structure	Rough
$s_p$ value	0.2 m

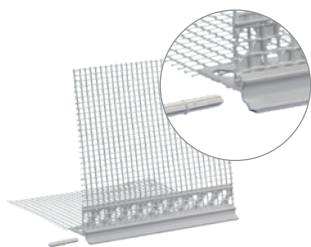
## ■ ■ Delivery form of best wood COVER PANEL FOR WINDOW LINTELS

Standard length 2800 mm,  
Shorter lengths are available by request.

Height mm	Thickness mm
100-500	40
100-500	60



## ■ ■ Accessories



### ■ best wood **drip edge profile**

For professional formation of a drip edge on the best wood COVER PANEL FOR WINDOW LINTELS (when ordering the best wood COVER PANEL FOR WINDOW LINTELS without drip edge profile)

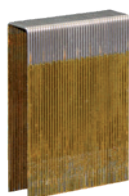
Profile length	2.00 rmt/rail
----------------	---------------



### ■ best wood **steel bracket for COVER PANEL FOR WINDOW LINTELS**

For horizontal stiffening of the best wood COVER PANEL FOR WINDOW LINTELS

Steel bracket	100 x 200 x 2; b = 200 mm
---------------	---------------------------



### ■ **Broad back staples** (stainless steel)

For fixing the best wood COVER PANEL FOR WINDOW LINTELS in timber frame construction

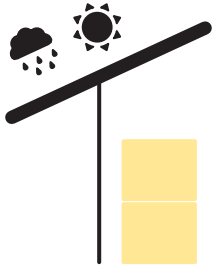
Broad back staples	
--------------------	--



### ■ best wood **FDM WALL**

assembly adhesive for sealing butt joints of the 2<sup>nd</sup> sealing level for window sills and for attaching reveal boards, sealing wedges and sealing corners. And for sealing joints in the wall insulation with joint widths of 2–5 mm. The assembly adhesive can be rendered over and painted. An air temperature and ambient temperature of  $\geq +5^{\circ}$  is required for at least 24 hours during processing.

For gap widths of	2–5 mm
Cartridge 310 ml	470g content



## ■ ■ Transportation and storage of best wood **COVER PANEL FOR WINDOW LINTELS**

The system components should be checked during an incoming goods inspection on delivery arrival and delivery notes and packing specifications should be kept in a safe place for future reference. Obvious defects must be reported immediately in writing after receipt of goods.

Please ensure that there is sufficient weatherproof storage space at the place of delivery. The material must be stored in a dry place and protected against UV rays and mechanical damage.

During the storage and transportation of pre-assembled panels with drip edge profile, it must be ensured that there are spacers between the individual panels at all times until installation takes place in order to prevent the drip edge profile from breaking off.

The best wood COVER PANEL FOR WINDOW LINTELS is delivered in cardboard boxes or on pallets, depending on the quantity.

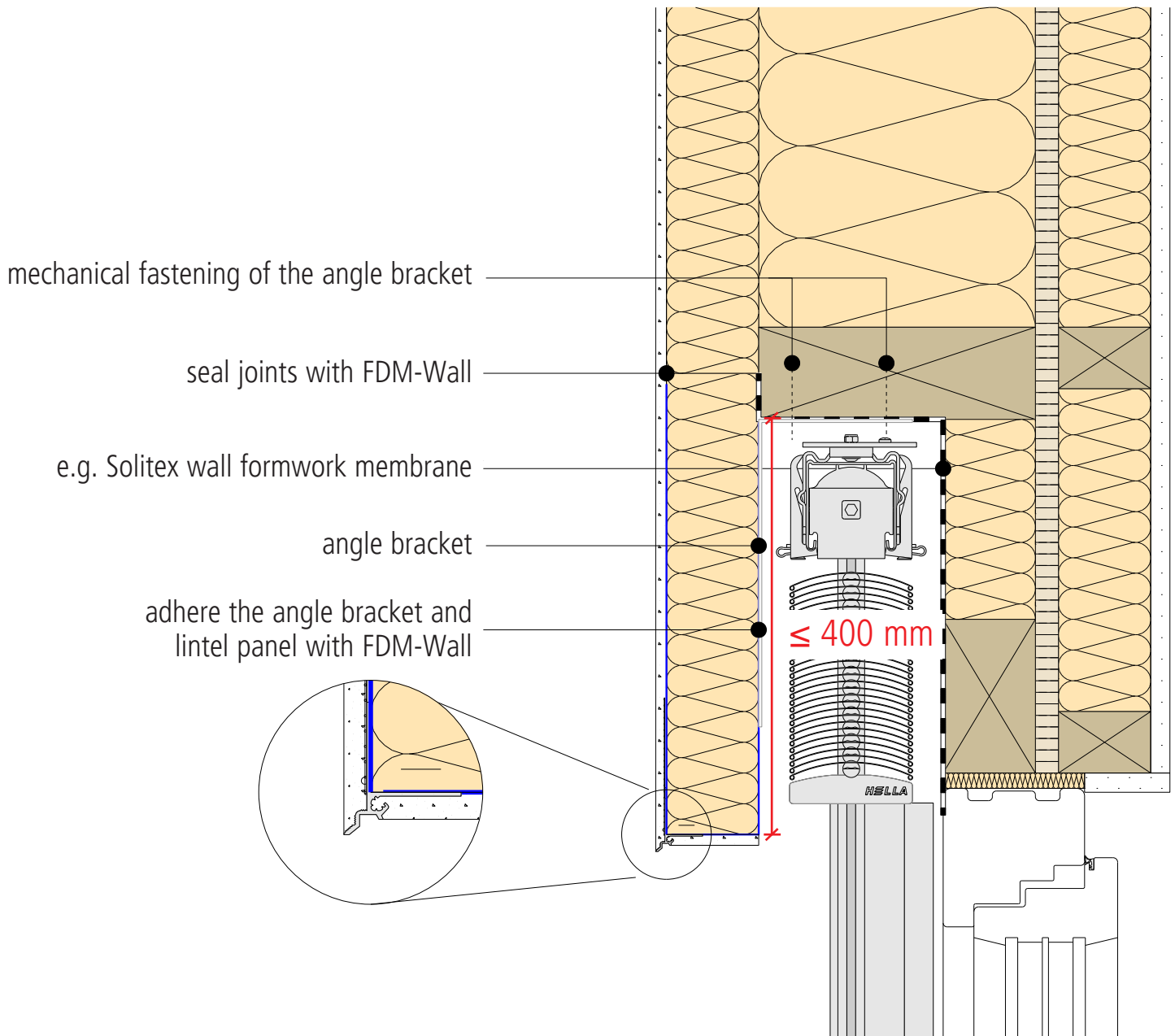
## ■ ■ Warranty

For technical reasons and reasons relating to building regulations, as well as warranty considerations, it is important to ensure that only best wood system components or approved materials are used.

The render system must be installed not later than 8 weeks after the best wood COVER PANEL FOR WINDOW LINTELS is installed. If this is not possible, the COVER PANEL FOR WINDOW LINTELS has to be covered with a tarpaulin. Make sure air can circulate behind the tarpaulin.

■ ■ Technical illustration

■ Vertical wall cross-section through COVER PANEL FOR WINDOW LINTELS



## ■ ■ Installation guide for best wood COVER PANEL FOR WINDOW LINTELS

Installation cover panel for window lintels



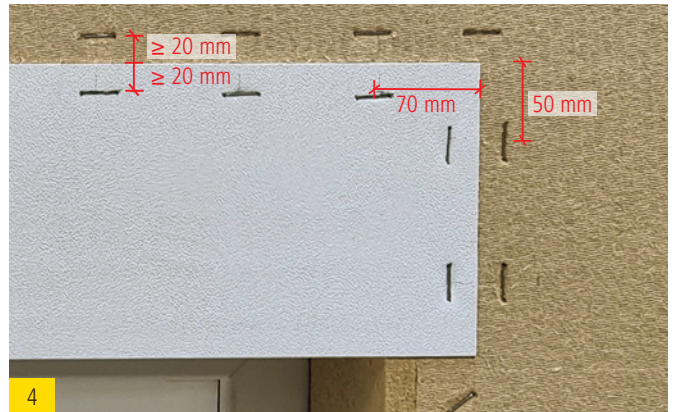
Leave half of the stanchion/waler width, but at least 40 mm free in the vicinity of the COVER PANEL FOR WINDOW LINTELS. A stanchion and a waler with at least  $b = 80$  mm must be chosen accordingly



Cover the entire stanchion with façade insulation beneath the panel. Maximum height of 400 mm from bottom edge of cover panel for window lintels to bottom edge of waler



Insert COVER PANEL FOR WINDOW LINTELS exactly into pocket



Staple the joint with broad back staples with axis size of 10 cm. (Edge spacing lengthways along gap 70 mm or 50 mm and edge spacing across gap min. 20 mm!). Fill the gaps of 2 – 5 mm in the façade level with FDM WALL

■ ■ Installation brackets with cover panel for window lintels longer than 1.0 m and at the joint



1 Application of FDM WALL to the bracket. For the number of brackets, see table



2 Press bracket onto rear of cover panel for window lintels



3 Screw bracket to waler with 4 screws 4.5 x 40

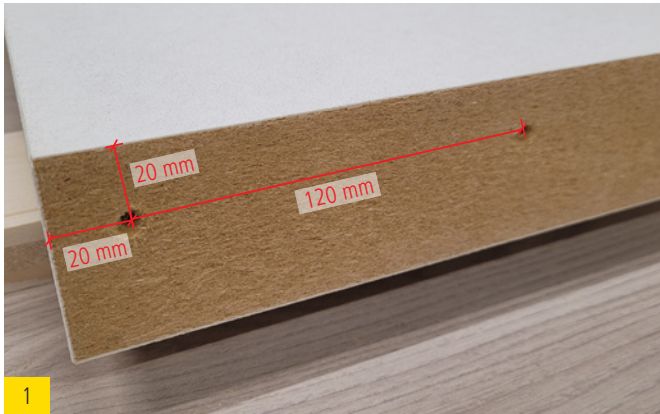
■ **Number of brackets** (bracket spacing 1000 mm)

Leg height of bracket with  $EH < 250$  mm: 150 mm (bracket by request)

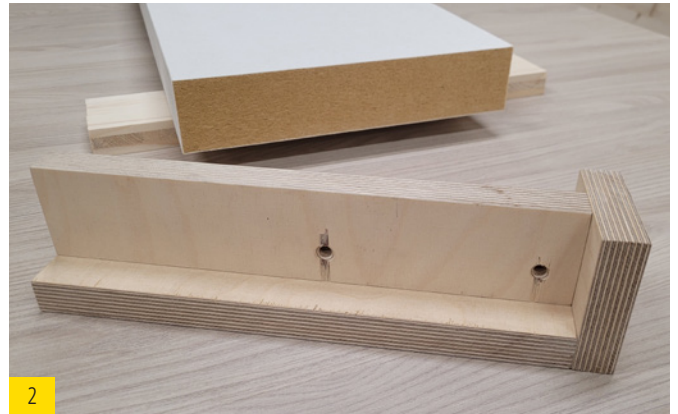
Leg height of bracket with  $EH \geq 250$  mm: 200 mm

Clear width between stanchions	Number of steel brackets required
0 – 1.00 m	0
1.01 – 2.00 m	1
2.01 – 2.75 m	2

## ■ ■ Installation with joint of the COVER PANEL FOR WINDOW LINTELS



Drill holes for beech wood dowels (8 x 40 mm) in both COVER PANEL FOR WINDOW LINTEL elements. Drill hole diameter 7 mm.



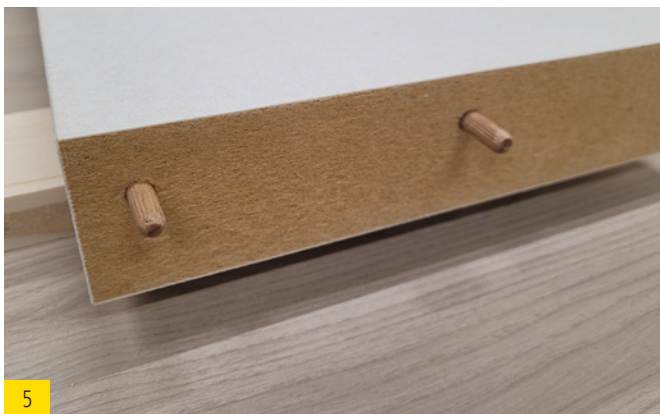
An installation aid for the precise positioning of the beech wood dowels is recommended.



Place the installation aid on the bottom edge of the COVER PANEL FOR WINDOW LINTELS.



Depth limiter for drilling depth depending on the material thickness of the installation aid. The drill hole must be 22 mm deep.



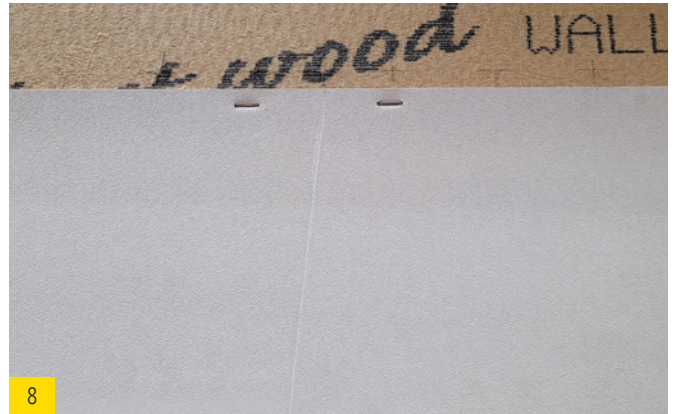
Insert beech wood dowels into the prepared drill holes.



Apply FDM WALL to the front of an element and connect the elements together.



7 Lift the COVER PANEL FOR WINDOW LINTELS into the prepared opening with 2 people.



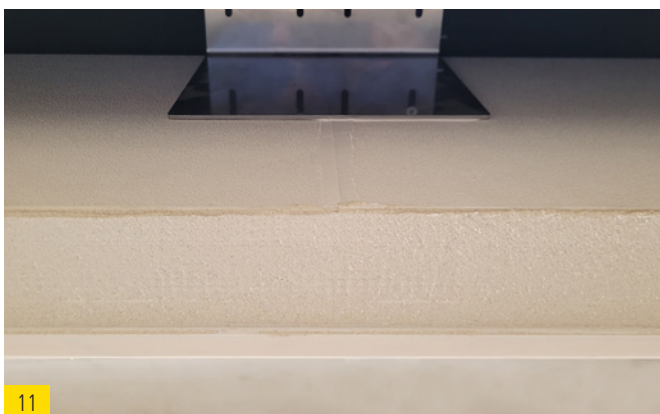
8 Secure on the left and right sides of the joint with a staple. Then insert the remaining staples.



9 Open joints at the butt joint must be closed with FDM WALL.



10 When embedding the drip edge profile, cut the fabric on the underside so that it does not protrude beyond the COVER PANEL FOR WINDOW LINTELS. The joint of the COVER PANEL FOR WINDOW LINTELS and the joint of the drip edge profile must be offset.



11 After embedding the drip edge profile, the bottom edge of the COVER PANEL FOR WINDOW LINTELS must be covered with final render and paint.



12 The side reveals must be finished with the render system, including paint, up to the top edge of the shaft.

## ■ Installation guide sun protection system

Installation example outdoor blind. Other options include roller shutters and vertical awnings.

### ■ Preparation:



1 All rendering and painting work has been completed.



2 The cable is prepared and fitted with a Hirschmann connector.  
Cable length = 1/2 window width

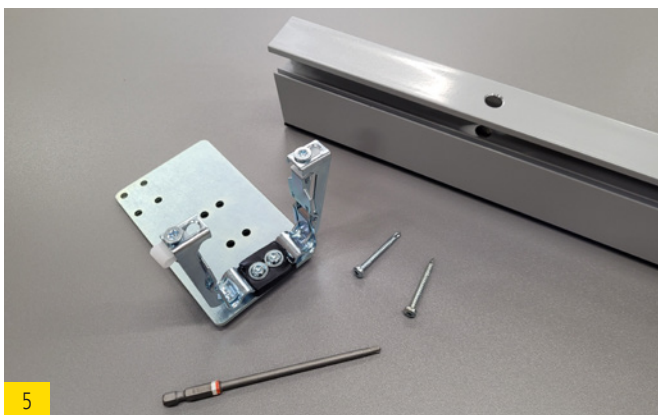
### ■ Installation:



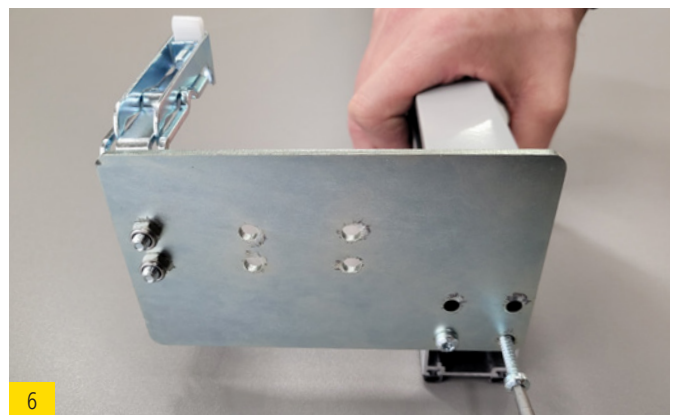
3 Check the width dimensions and, if necessary, mark on the total width of the sun protection



4 Tip: To ensure an even distance to the window sill, use 5 mm shim material (identical to the detailed drawing and order).



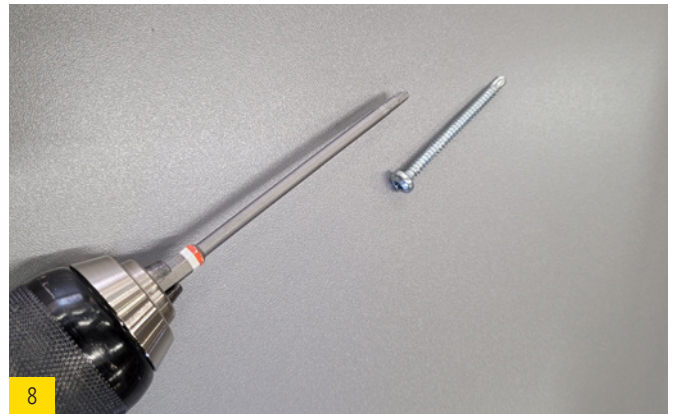
5 Accessories for mounting the retaining plates



6 Screw the guide rails to the retaining plates for the outdoor blind.



7 Align the guide rails vertically and parallel to the wall.



8 Tip: Use a long bit for easy and clean installation.



9 The distance to the render must be at least 5 mm.



10 Mount the guide rails using the provided screws.



11 Connect the drive cable and lower the outdoor blind by approx. 20 – 30 cm.



12 Slide the prepared outdoor blind into the shaft ...



13 ... and lock it into the base.



14 Align the outdoor blind along the width and slightly tighten the screws at the base.



16 Mount the locking screw.



15 Slide the guide rail inserts in and lock them into place correctly.



17 Move to the upper and lower end positions using the adjustment cable.



18 Set the end position (if not preset when ordered) using the adjustment buttons (see the motor manufacturer's instructions).



19 Connect the cables using the Hirschmann connectors. Use the cable tie provided to secure the cable to the top rail.

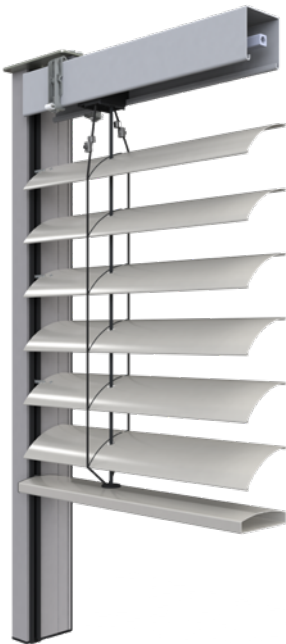


20 Fit the cover caps onto the guide rails.



21 Perform a complete test drive to check the installation.

## ■ Shaft outdoor blind 80/92 mm flanged



### ■ Min. recess depths

Min. recess depths [mm]	Shaft outdoor blind 2.5	Shaft outdoor blind 4.0
ARB 80	110	120
AR 92 ECN	140	140

### ■ Min./max. dimensions

ARB 80 AR 92 ECN	Drive	Min. width [mm]	Max. width [mm]	Max. height [mm]	Max. area [m <sup>2</sup> ]
Shaft outdoor blind 2.5	Motor	600	2500	5200	13
Shaft outdoor blind 4.0	Motor	600	4000	5200	18

### ■ Optional guide versions

#### with FE30 and spacer

Shaft outdoor blind 2.5



Shaft outdoor blind 4.0



#### with flush-mounted guide rails

Shaft outdoor blind 2.5



Shaft outdoor blind 4.0



#### Supplied with

- Blinds with top and bottom rail
- Top rail base with support for fixing to the guide rail
- Drive Motor
- Reinforced guide rail FE30 for reveal installation
- Additional bracing panel up to 4 m width
- 180° degree turn with ARB 80
- Noise-reducing vertical bracket VT1G
- Freely selectable profile colours from the HELLA Colour worlds

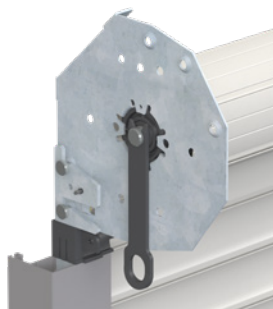
#### Additional equipment

- Flush-mounted guide rail
- Spacer for reinforced guide rail FE30
- Wall-mounted radio transmitter / hand-held radio transmitter
- Comfort drive speed
- Crank handle drive for version 2.5
- Working position
- Daylight control system

#### Product advantages

- Heat protection
- Visual protection
- Glare protection
- High-quality design
- Energy saving
- Attractive appearance thanks to flanged perforations in the slat without plastic parts
- Easy, quick and self-supporting installation in on-site shafts

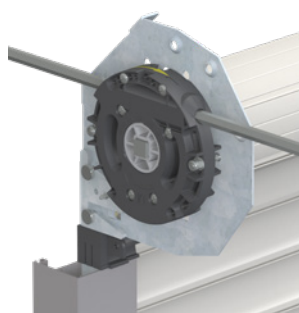
## ■ Shaft roller shutter



Bearing can be attached to the guide rail either as a left-hand or right-hand roller.



A height-adjustable inspection panel is available as an option.



Motor or crank handle drive

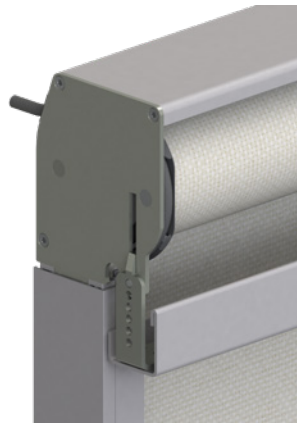
## ■ Min./max. dimensions

Profile type	Min. width [mm]	Max. width [mm]	Max. area [m <sup>2</sup> ]	Max. height [mm]
A37 Crank handle drive	400	3000	7.5	e.g.: Shaft opening with 170 mm = 2400 mm
A37 Motor drive	600	3000	7.5	

Supplied with	Additional equipment	Product advantages
<ul style="list-style-type: none"> <li>· Motor drive with shaft and bearing</li> <li>· Blind locked, end rod with seal and weighted steel, stopper concealed</li> <li>· Guide rail 53x22 mm with guide rail inserts</li> <li>· Aluminium components according to HELLA Colour worlds</li> <li>· Mounting material</li> </ul>	<ul style="list-style-type: none"> <li>· Inspection panel made of folded aluminium</li> <li>· Guide rail with 20 mm rear spacing</li> <li>· Crank handle drive</li> </ul>	<ul style="list-style-type: none"> <li>· Heat insulation</li> <li>· Visual protection</li> <li>· Sun protection</li> <li>· Soundproofing</li> <li>· Weather protection</li> <li>· Glare protection</li> <li>· Darkening</li> <li>· Facade design without visible box</li> <li>· Long service life and easy operation thanks to high-quality components</li> </ul>

## ■ ■ Recess awning protect

### Recess awning protect with side seam guide



- Self-supporting shaft installation with half-box
- Optional inspection panel for shaft cover and cable storage
- Guide rails can be mounted directly or with spacers. Alternatively, deep guide rails are available
- Height-adjustable inspection panel

## ■ Min./max. dimensions

Box size	Max. area [m <sup>2</sup> ]	Min. recess depth [mm]	Max. width [mm]	Max. height [mm]
H110	12	105	3500	3500
H115	12	125	3500	4000
H130	12	140	3500	4500

The min./max. dimensions may vary slightly depending on the type of fabric. For further details, please contact HELLA.

Supplied with	Additional equipment	Product advantages
<ul style="list-style-type: none"> <li>· Half-cassette, self-supporting, attached to the guide rails</li> <li>· Guide rails with end caps for side seam guide (without spacer)</li> <li>· Motor drive 230V, with 3 m cable without Hirschmann connector male/female</li> <li>· Cover selection from the HELLA G-Screen glass fibre fabrics and other covers from the currently available product range</li> <li>· Weighted bottom bar</li> <li>· Freely selectable profile colours from the HELLA Colour worlds</li> </ul>	<ul style="list-style-type: none"> <li>· Inspection panel for shaft cover and cable storage</li> <li>· Spacer for guide rails</li> <li>· Alternatively, deep guide rails</li> <li>· Wall-mounted radio transmitter / hand-held radio transmitter</li> <li>· Large selection of alternative covers according to collection</li> </ul>	<ul style="list-style-type: none"> <li>· Heat protection</li> <li>· Visual protection</li> <li>· Glare protection</li> <li>· Darkening</li> <li>· Wind-resistant sun protection</li> <li>· Energy saving</li> <li>· Self-supporting installation in on-site shafts without additional fixing</li> <li>· Transparency to the outside through screen fabric</li> <li>· Wide range of designs for decorative purposes</li> </ul>



## **Headquarters Germany**

best wood SCHNEIDER GmbH  
Kappel 28  
D-88436 Eberhardzell  
Phone +49 (0)7355 9320-0  
Fax +49 (0)7355 9320-300  
E-mail [info@schneider-holz.com](mailto:info@schneider-holz.com)

## **Subsidiary Meßkirch**

best wood SCHNEIDER GmbH  
Industriepark 16  
D-88605 Meßkirch  
Phone +49 (0)7355 9320-8000  
Fax +49 (0)7355 9320-300  
E-mail [info@schneider-holz.com](mailto:info@schneider-holz.com)

## **Subsidiary Switzerland**

best wood SCHNEIDER GmbH  
Weinfelderstrasse 29A  
CH-8560 Märstetten  
Phone +41 (0)71 918 79 79  
Fax +41 (0)71 918 79 78  
E-mail [info@schneider-holz.com](mailto:info@schneider-holz.com)