

best wood SEALING LEVEL FOR WINDOW SILLS

The simple solution for sealing below window sills



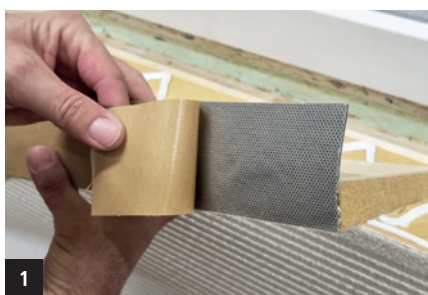
Product description

The wood fiber insulating wedge with polyurea coating prevents the penetration of water into the vicinity of the window sill and therefore provides a standard-compliant second sealing level. The time taken to do the work is reduced considerably because of the fact that just a few, simple work steps are required. There is a self-adhesive coating on the rear. The connection to wood and wood fiber components takes place using best wood FDM WALL. Joints are glued using the best wood ADHESIVE TAPE as usual (see installation situation below).

Please note the special
processing guidelines for ETICS!
read more at www.schneider-holz.com

Characteristics

Wood fiber insulating wedge	DIN-EN13171
Density	180 kg/m ³
Coating	Polyurea
Elongation at break	approx. 220 %
Tensile strength	approx. 7.3 N / mm ²
Fire class	B2 (DIN4102-01)
Temperature resistance	-40°C to +80°C



1 Self-adhesive moulded parts

2 How it's done: Cut sealing level to an exact fit, remove protective film, adjust and glue in (Note: Window sill groove width \geq 5 mm)

3 Apply FDM WALL to all butt joints

4 Glue with best wood ADHESIVE TAPE and apply pressure

5 Fit best wood window sill RENDER STOP BEAD and glue with best wood ADHESIVE TAPE

6 Fit window sill and reveal board

best wood **Sealing level for window sills**

The standard solution for water-tight sealing in the vicinity of the window sill. The sealing wedge can be cut to the required length using conventional circular saws, therefore providing maximum flexibility for the processor.



Depth mm	Thickness mm	Item no.	Length mm	UP
100	25	6196DICHTKEIL100	1200	pc
150	25	6196DICHTKEIL150	1200	pc
200	25	6196DICHTKEIL200	1200	pc
250	35	6196DICHTKEIL250	1200	pc
300	35	6196DICHTKEIL300	1200	pc

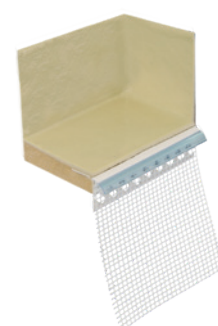
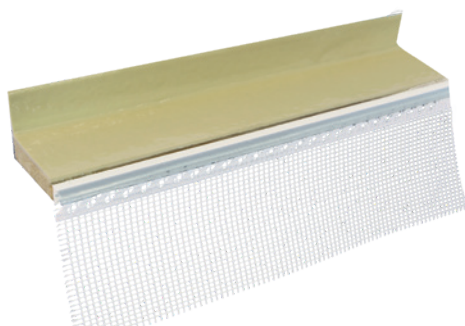
Further depths available by request

Depth mm	Item no. RIGHT	Length mm	UP
100	6196DICHTECKE100R	150	pc
150	6196DICHTECKE150R	150	pc
200	6196DICHTECKE200R	150	pc
250	6196DICHTECKE250R	150	pc
300	6196DICHTECKE300R	150	pc

Depth mm	Item no. LEFT	Length mm	UP
100	6196DICHTECKE100L	150	pc
150	6196DICHTECKE150L	150	pc
200	6196DICHTECKE200L	150	pc
250	6196DICHTECKE250L	150	pc
300	6196DICHTECKE300L	150	pc

best wood **sealing level for window sills with connection profile**

The ready-made solution for water-tight sealing in the vicinity of the window sill. The sealing level is manufactured with the required depth in the factory and delivered. The render stop bead is already integrated, and enables quick and easy installation on the construction site.



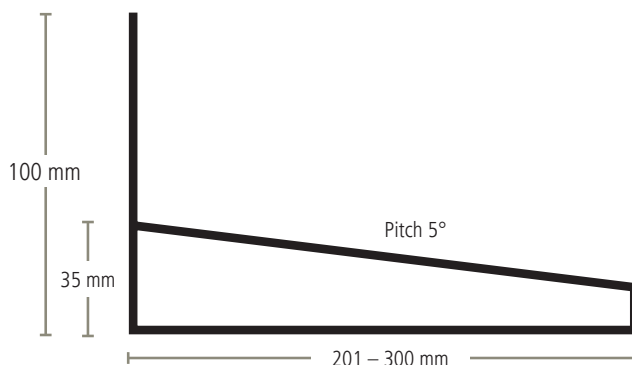
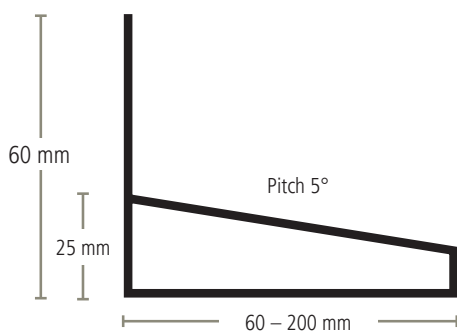
Depth mm	Thickness mm	Item no.	Length mm	UP
60-200	25	6197DICHTKEIL60-200	1200	pc
201-300	35	6197DICHTKEIL201-300	1200	pc

Further depths available by request

Depth mm	Item no. RIGHT	Length mm	UP
60-200	6197DICHTECKE60-200R	150	pc
201-300	6197DICHTECKE201-300R	150	pc

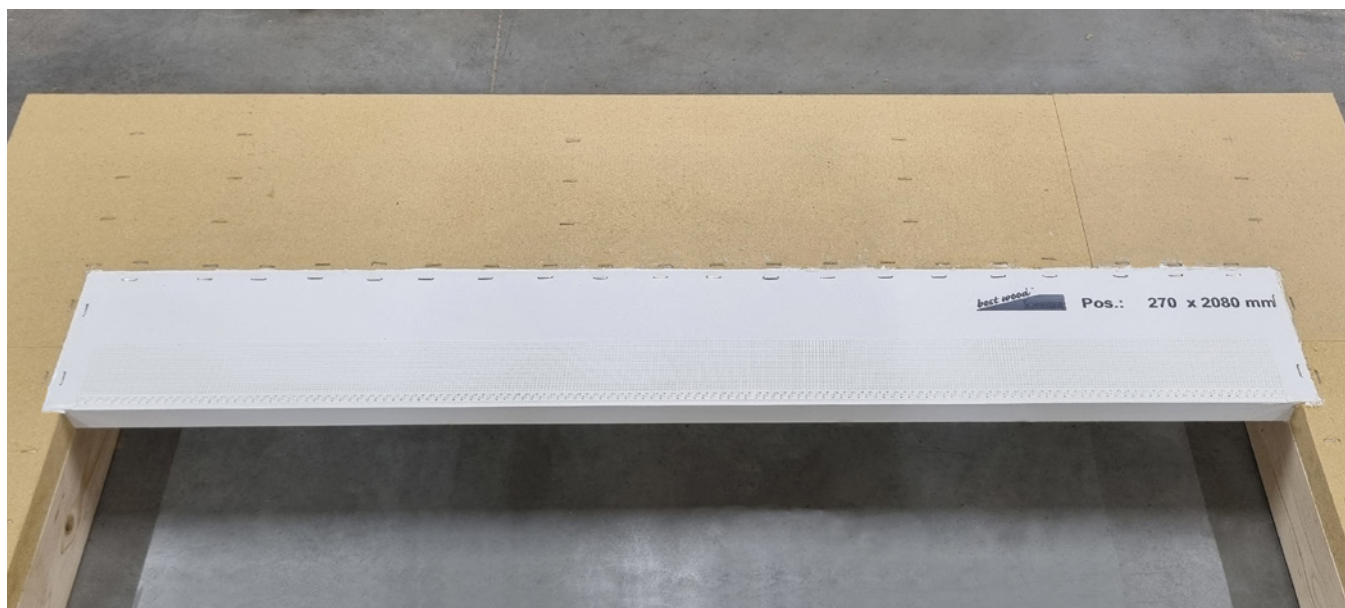
Depth mm	Item no. LEFT	Length mm	UP
60-200	6197DICHTECKE60-200L	150	pc
201-300	6197DICHTECKE201-300L	150	pc

best wood **sealing level cross-section**



best wood COVER PANEL FOR WINDOW LINTELS

The pre-coated wood fiber insulation board provides a simple solution for covering Venetian blinds packages



Product description

The pre-coated wood fiber insulation board (WALL 180) provides a simple, stable and visually appealing solution for covering sun protection blinds, like the HELLA system. The coating is applied on three sides so that a decent and paintable rear of the COVER PANEL FOR WINDOW LINTELS is guaranteed without additional plastering of the panel. The front and bottom of the best wood COVER PANEL FOR WINDOW LINTELS is rendered with an ETICS-compliant render system.

Characteristics

Denomination	WF-EN 13171-T5-DS(70,-)3-CS(10\Y)150-TR30-WS1,0-MU3-AFr100
Standard	EN 13171
ETA/design approval	ETA-16/0997; aBG Z-33.84-1674
Density	180 [kg/m ³]
Nominal value of thermal conductivity λ_D	0.043 [W/(mK)]
Rated value of thermal conductivity λ_B	0.045 [W/(mK)]
Reaction to fire according to DIN EN 13501-1	E
Construction material class according to DIN 4102-1	B2
Full declaration	Wood fibers, PMDI gluing, paraffin
Production process	Dry process
Compressive stress at 10% compression	≥ 150 [kPa]
Tensile strength perpendicular to the plane of the board	≥ 30 [kPa]
Modulus of elasticity $E_{(d)}$	$\geq 2,50$ [N/mm ²]
Water vapor diffusion resistance μ	3
Linear flow resistance	> 100 [kPa·s/m ²]
Short time water absorption	≤ 1.0 [kg/m ²]
Specific heat capacity	2100 [J/(kgK)]
Waste code according to AVV	030105, 170201 (unrendered boards); 170904 (rendered boards)

Coating

Color	White
Structure	Rough
s_d value	0.2 m

Processing

Please note the special processing guidelines for best wood cover panel for window lintels!
read more at www.schneider-holz.com



1 Staple COVER PANEL FOR WINDOW LINTELS all round at half the stanchion / waler width



2 Fill the gaps in the facade level with FDM WALL



3 Apply FDM WALL to the bracket and press on to the back of the COVER PANEL FOR WINDOW LINTELS (see processing guideline for distances)



4 Screw bracket in waler. Remark: With board joints a bracket must also be provided in the vicinity of the joint.

Cover panel for window lintels 40 mm

Height mm	Length mm	Thickness mm	Item no.	UP
300	2800	40	6198-40STURZBLENDE300	Piece
400	2800	40	6198-40STURZBLENDE400	Piece
from 401	2800	40	6198-40STURZBLENDEab401	Piece

Cover panel for window lintels 60 mm

Height mm	Length mm	Thickness mm	Item no.	UP
300	2800	60	6198-60STURZBLENDE300	Piece
400	2800	60	6198-60STURZBLENDE400	Piece
from 401	2800	60	6198-60STURZBLENDEab401	Piece

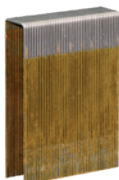
Transportation charges, delivery times and other dimensions by request.

Accessories

best wood stainless steel bracket COVER PANEL FOR WINDOW LINTELS

See processing guideline for quantity required for attachment

Item no.	UP
6199STAHLWINKEL150	Piece
6199STAHLWINKEL200	Piece



Broad back staples
(stainless steel)

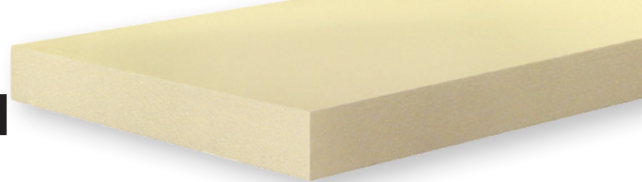


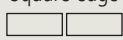
best wood FDM WALL
(see page 37)



best wood PERIMETER INSULATION

Plaster baseboard for base details in the outdoor area



Cover size (m ² per board)	Square edge 		500 x 1000 mm (0.5 m ²)	
Thickness in mm	by request	Item no.	m ² per PU	pieces/PU
40		6124PMD40mm	6.0	12
60		6124PMD60mm	4.0	8
80		6124PMD80mm	3.0	6
100		6124PMD100mm	2.0	4
120		6124PMD120mm	2.0	4
140		6124PMD140mm	1.5	3*
160		6124PMD160mm	1.5	3*
180		6124PMD180mm	1.0	2*
200		6124PMD200mm	1.0	2*

*Only complete packing units available

Product description

The best wood PERIMETER INSULATION BOARD is made from high quality polystyrene. The insulation boards are particularly characterized by a high grade of accuracy and a high degree of non-shrinking. This enables an efficient and no joints processing.

Characteristics perimeter insulation

Specification	EPS 035 PW
Rated value of thermal conductivity λ_B	0.035 [W/(mK)]
Application	Perimeter insulation
Edge profiles	Square edge
Compressive stress at 10 % compression	150 [kPa]
Fire index	B1 according to DIN 4102

Fields of application according to DIN 4108-10



- For installations with special base detail, see best wood processing guidelines
- Furthermore, applicable as a base insulation board in the solid construction. An installation depth of up to 3 m is possible

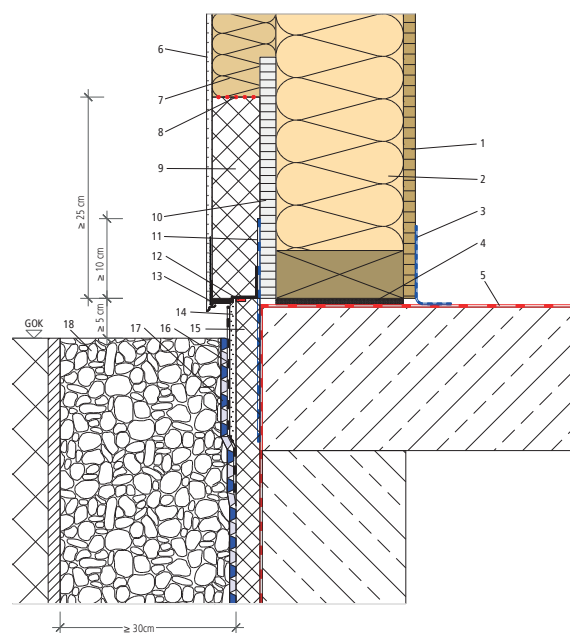


More detailed information about the different fields of application can be found in our technical data sheet.

Download at www.schneider-holz.com


Base point

On the splash area with gravel and ≥ 5 cm distance between ground edge and lower edge of the base point.



- 1 Wood-based panel, e.g. OSB
- 2 Timber frame construction with best wood FLEX 50
- 3 Airtightness/vapor check at base
- 4 Swelling mortar bedding
- 5 Sealing according to DIN 18533-1
- 6 best wood render system
- 7 best wood WALL 180
- 8 Front sides glued with best wood FDM WALL
- 9 best wood perimeter insulation board
- 10 Cement-bound chipboard
- 11 Vertical sealing according to DIN 18533-1, e.g. sealing system of Ceresit with pre-painting BT 26 and dense ground BT 21
- 12 Joint insulation tape Illmod 15/5-10
- 13 best wood base rail
- 14 Base reinforcing mortar
- 15 Base insulation board/perimeter insulation
- 16 Mineral seal
- 17 Knob-protection film
- 18 Gravel with drainage

best wood PERIMETER INSULATION REVEAL BOARD

Cover size (m ² per board)	Square edge 		500 x 1000 mm (0.5 m ²)	
Thickness in mm	by request	Item no.	m ² per PU	pieces/PU
20		6124PMD20mm	12.0	24
40		6124PMD40mm	6.0	12

Standard stocked items
Delivery by request

Reinforcement, plaster, paint, base profiles and accessories

best wood **adhesive and reinforcing mortar (UP)**

Adhesive and reinforcing mortar with organic lightweight aggregates for fixing wood fiber insulation boards to mineral substrates. Furthermore, it can be used as a base coat in best wood ETICS.



Item no.	Approx. consumption		PU	UP
6160BKuAMÖRTEL	Adhesion: approx. 3.0–3.5 kg/m ² Reinforcement: approx. 6.0–7.0 kg/m ² Reinforcement: approx. 4.0–5.0 kg/m ²	(depending on the processing, surface and consistency) for pre-rendered WALL 140/180	25 kg/bag, 42 bags/pallet	kg

best wood **mineral render (MOP)**

Mineral final render, white



Item no.	Approx. consumption		PU	UP
6160MPKRATZ2,0	2.0 mm grain scraped surface render texture	2.5 kg/m ²	25 kg/bag, 42 bags/pallet	kg
6160MPKRATZ3,0	3.0 mm grain scraped surface render texture	3.5 kg/m ²	25 kg/bag, 42 bags/pallet	kg
	Colored with tone addition according to customer request (min. quantity 150 kg) lightness value > 20% (M1-M2)			kg
	Colored with tone addition according to customer request (min. quantity 150 kg) lightness value > 20% (M3)			kg

best wood **silicone resin render (SOP)**

Silicone resin finishing render, white

Attention! Non-algicide/fungicide.



Item no.	Approx. consumption		PU	UP
6162SHPKRATZ2,0	2.0 mm grain scraped surface render texture	3.0 kg/m ²	25 kg/bucket, 24 buckets/pallet	kg
6162SHPKRATZ3,0	3.0 mm grain scraped surface render texture	4.0 kg/m ²	25 kg/bucket, 24 buckets/pallet	kg
	Colored with tone addition according to customer request PG1-PG2 lightness value > 20%			kg
	Colored with tone addition according to customer request PG3 lightness value > 20%			kg
	Algicide/fungicide addition by customer request			kg

best wood **silicone resin paint**

Facade paint on silicone resin basis, fungicide/algicide adjusted, color shade 921 white. Color shades available according to best wood color card or RAL/NCS color card.



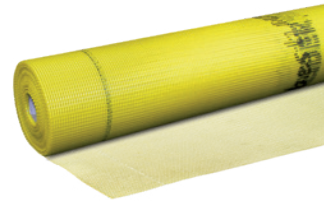
Item no.	Approx. consumption		PU	UP
6161SHF12,5	0.175 [l/m ²] (single coat)		12.5 l/bucket	l
	Colored with tone addition according to color sample, lightness value > 20% (PG1-PG3)			l
	Product sample			1.0 l

best wood **color card**

Item no.	
6153FTK	

best wood **reinforcement fabric**

System-glass fiber fabric, alkali resistant and with a high tensile strength mesh width 4 x 4 mm, width 110 cm.



Item no.		PU	UP
6150AG4x4		55.00 m ² /roll	m ²

best wood **reinforcing arrow**

Corner bead for diagonal reinforcement on building openings, mesh width 4 x 4 mm.



Item no.		PU	UP
6150AP4x4		100 pcs./pack	pc

best wood **reveal angle**

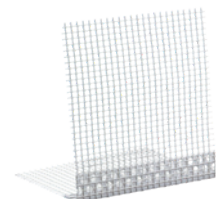
For diagonal reinforcement at openings in buildings with additional rupture prevention in the corner of the window, mesh width 4 x 4 mm.



Item no.	Delivery form	PU	UP
6152SEW10	for reveal depth up to 10 cm	25 pcs./pack	pc
6152SEW20	for reveal depth up to 20 cm	25 pcs./pack	pc

best wood **corner bead with fiber mesh**

Plastic profile with integrated fiber mesh for corners and edges.



Item no.		PU	UP
6150GEW2,5		125 rmt/pack 2.50 rmt/rail	rmt rmt

best wood **connector for render profiles**

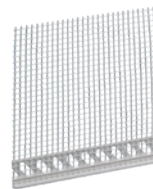
Secure connection between the profile ends. No slipping of the profile at the joints. This allows a correctly aligned plug up.



Item no.		PU	UP
6131STECKVERBINDER		30 pcs./pack	pack

best wood **render stop bead**

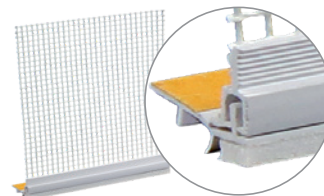
Profiles to form render ends with 6 mm edge.



Item no.		Profile length	PU	UP
6140PAP2,0		2.00 rmt/rail	25 rails/bundle 2.00 rmt/rail	rmt rmt

best wood **architrave bead with telescope function**

With a sealing lip for system connections on doors/windows, etc. High-quality architrave bead that is able to absorb horizontal or vertical movements of the facade. Including a plastic bar with adhesive strips for application of the cover membrane.



Item no.		Profile length	PU	UP
6140ATELE1,4		1.40 rmt/rail	25 rails/bundle 1.40 rmt/rail	rmt rmt
6140ATELE2,4		2.40 rmt/rail	25 rails/bundle 2.40 rmt/rail	rmt rmt

best wood **primer stick**

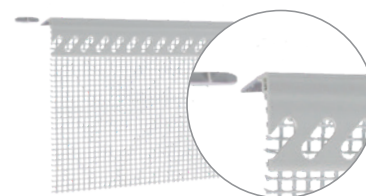
For architrave beads for improving adhesion on surfaces (such as paints, wood glazes, powder coatings and the like). It is essential to check compatibility on the previously cleaned subsurfaces and only apply the primer to the areas that are going to be directly bonded. Sufficient for approx. 300 running metres of joint with a dust-free surface.



Item no.		PU	UP
6145PS		1	pc

best wood **ATTIKA render stop bead**

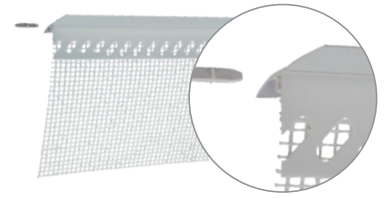
ATTIKA stop bead for ETICS with one-sided tissue part, drip edge and render removal edge including connector for a neat render stop and targeted water guidance below the attic covering, including 30 connectors.



Item no.		Profile length	PU	UP
6140PAPA2,0		2.00 rmt/rail	15 rails/bundle 2.00 rmt/rail	rmt rmt

best wood **WINDOW SILL** render stop bead

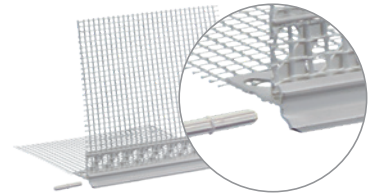
WINDOW SILL stop bead for ETICS with one-sided tissue part, drip edge and render removal edge including connector for a neat render stop and retrofitting of a second sealing level with sealing film, including 30 connectors.



Item no.		Profile length	PU	UP
6140PAPS2,0		2.00 rmt/rail	15 rails/bundle 2.00 rmt/rail	rmt rmt

best wood **drip edge** profile

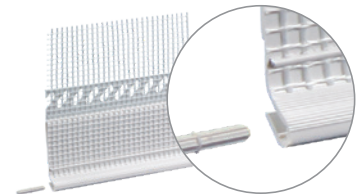
Plastic profile to form horizontal render end stops, including 30 connectors, 4 external corners and 2 internal corners per bundle.



Item no.		Profile length	PU	UP
6140APTROPF2,0		2.00 rmt/rail	25 rails/bundle 2.00 rmt/rail	rmt rmt

best wood **sheet metal connection** profile

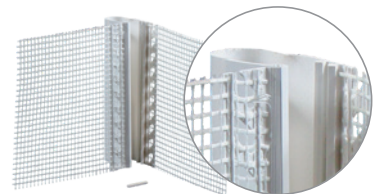
Clip-on profile to form render connections to sheet metal parts, including 30 connectors per bundle.



Item no.		Profile length	PU	UP
6140BAP2,0		2.00 rmt/rail	25 rails/bundle 2.00 rmt/rail	rmt rmt

best wood **expansion joint** profile for corners

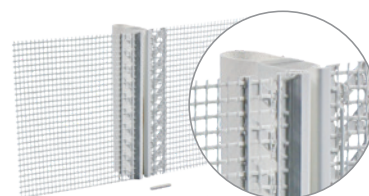
Plastic profile to form movement joints on wall surfaces (inner corners), including 30 connectors per bundle.



Item no.		Profile length	PU	UP
6140DFPE2,0		2.00 rmt/rail	25 rails/bundle 2.00 rmt/rail	rmt rmt

best wood **expansion joint profile** for continuous surfaces

Plastic profile to form movement joints on continuous wall surfaces, including 50 connectors per bundle.

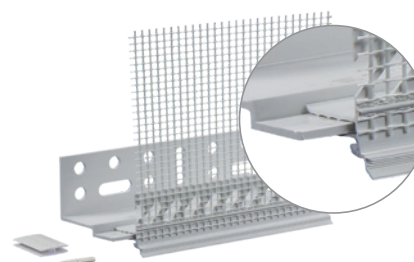


Item no.		Profile length	PU	UP
6140DFPF2,0		2.00 rmt/rail	25 rails/bundle	rmt
			2.00 rmt/rail	rmt

best wood **plastic base profiles**

Plastic base rail system with base section and clip-on mesh rail.

Each packing unit (PU) contains 30 connectors, a butt joint connector, 2 corner connecting profiles for outer corners and 1 corner connecting profile for inner corners.



Item no.	Delivery form	Profile length	PU	UP
6130SOCKELSYSTEMDS60	Projection 60 mm	2.00 rmt/rail	20.00 rmt/bundle	rmt
			2.00 rmt/rail	rmt
6130SOCKELSYSTEMDS80	Projection 80 mm	2.00 rmt/rail	20.00 rmt/bundle	rmt
			2.00 rmt/rail	rmt
6130SOCKELSYSTEMDS100	Projection 100 mm	2.00 rmt/rail	20.00 rmt/bundle	rmt
			2.00 rmt/rail	rmt
6130SOCKELSYSTEMDS120	Projection 120 mm	2.00 rmt/rail	20.00 rmt/bundle	rmt
			2.00 rmt/rail	rmt
6130SOCKELSYSTEMDS140	Projection 140 mm	2.00 rmt/rail	20.00 rmt/bundle	rmt
			2.00 rmt/rail	rmt
6130SOCKELSYSTEMDS160	Projection 160 mm	2.00 rmt/rail	20.00 rmt/bundle	rmt
			2.00 rmt/rail	rmt

best wood **base profile extension**

Extension for the base profile, for an additional 40 mm of insulation material thickness.



Item no.			PU	UP
6131VSCHDSE40MM		2.0 rmt/rail	20 rmt/bundle	rmt

best wood **base connecting profile for outer corners**

Corner connecting profile for perfectly fitting outer corners of base profiles on plastic as well as alu profiles.



Item no.		PU	UP
6132EVAUSSENECKZ15		10 pcs./bag	pack

Only available in full packing units (bags)

best wood **base connecting profile for inner corners**

Corner connecting profile for perfectly fitting inner corners of base profiles on plastic as well as alu profiles.

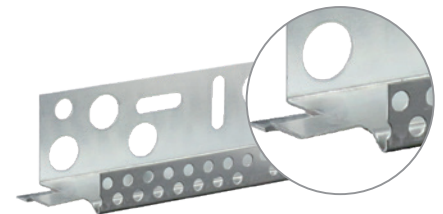


Item no.		PU	UP
6133EVINNENECKZ15		10 pcs./bag	pack

Only available in full packing units (bags)

best wood **aluminium base profiles**

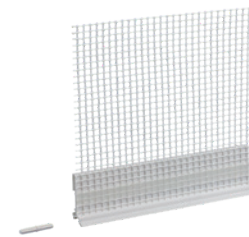
Base rail system from aluminum with integrated connector.
(tissue strip not included)



Item no.	Delivery form		PU	UP
6129ALUSOCKELPROFIL040	Projection 40 mm	2.50 rmt/rail	25.00 rmt/bundle	rmt
			2.50 rmt/rail	rmt
6129ALUSOCKELPROFIL060	Projection 60 mm	2.50 rmt/rail	25.00 rmt/bundle	rmt
			2.50 rmt/rail	rmt
6129ALUSOCKELPROFIL080	Projection 80 mm	2.50 rmt/rail	25.00 rmt/bundle	rmt
			2.50 rmt/rail	rmt
6129ALUSOCKELPROFIL100	Projection 100 mm	2.50 rmt/rail	25.00 rmt/bundle	rmt
			2.50 rmt/rail	rmt
6129ALUSOCKELPROFIL120	Projection 120 mm	2.50 rmt/rail	25.00 rmt/bundle	rmt
			2.50 rmt/rail	rmt
No stocked item, only available as entire bundle				
6129ALUSOKELPROFIL140	Projection 140 mm	2.50 rmt/rail	25.00 rmt/bundle	rmt
6129ALUSOKELPROFIL160	Projection 160 mm	2.50 rmt/rail	25.00 rmt/bundle	rmt
6129ALUSOKELPROFIL180	Projection 180 mm	2.50 rmt/rail	25.00 rmt/bundle	rmt
6129ALUSOKELPROFIL200	Projection 200 mm	2.50 rmt/rail	25.00 rmt/bundle	rmt

best wood **tissue strip for aluminium base profile**

Attachable plastic profile with tissue part for aluminium base profile, including 30 connectors per bundle.
(connecting profile for inner and outer corners not included)



Item no.			PU	UP
6135AUFSTECKPROFIL		2.50 rmt/rail	50.00 rmt/bundle	rmt
			2.50 rmt/rail	rmt

best wood **joint insulation tape**

Pre-compressed expanding foam insulation tape to seal open joints and connections in facades against driving rain whilst permitting vapor diffusion.

UV-resistant and watertight up to 600 Pa.

Building material group BG1 according to DIN 18 542.

Building material class B1 according to DIN 4102



Item no.	Delivery form		PU	UP
6180TP6001237	Type 12/3-7, gap width 3–7 mm	8.00 rmt/roll	25 rolls/carton	rmt
6180TP60015510	Type 15/5-10, gap width 5–10 mm	5.60 rmt/roll	20 rolls/carton	rmt
6180TP600201018	Type 20/10-18, gap width 10–18 mm	4.50 rmt/roll	10 rolls/carton	rmt

Only available in full packing units (carton)

best wood **stainless steel bracket cover panel for window lintels**

Stainless steel bracket for horizontal stiffening of the best wood STURZBLENDE



Art.-Nr.	PE
6199STAHLWINKEL150	Piece
6199STAHLWINKEL200	Piece

ETICS Fastening material

best wood Ejotharm STR H insulating render screw for insulation boards

Screw for insulation boards with a diameter of 6 mm for flush fastening on wooden substrates. Plate Ø 60 mm. Effective screw-in depth: min. 35 mm.



Item no.	Delivery form	PU	UP
6120TD6/080	6 x 80 mm	100 pcs.	pack
6120TD6/100	6 x 100 mm	100 pcs.	pack
6120TD6/120	6 x 120 mm	100 pcs.	pack
6120TD6/140	6 x 140 mm	100 pcs.	pack
6120TD6/160	6 x 160 mm	100 pcs.	pack
6120TD6/180	6 x 180 mm	100 pcs.	pack
6120TD6/200	6 x 200 mm	100 pcs.	pack
6120TD6/220	6 x 220 mm	100 pcs.	pack
6120TD6/240	6 x 240 mm	100 pcs.	pack
6120TD6/260	6 x 260 mm	100 pcs.	pack
6120TD6/280	6 x 280 mm	100 pcs.	pack
6120TD6/300	6 x 300 mm	100 pcs.	pack
Polystyrene caps (EPS) are already included in the packing unit!			

Only available in full packing units (packs)

best wood Ejotharm STR U 2G screw-in anchor for insulation boards

Pre-assembled screw-in anchor, Ø 8 mm, for insulation boards. Universal screw-in anchor for countersunk and surface fixed installation in concrete and masonry. Plate Ø 60 mm.



Item no.	Delivery form	PU	UP
6121DSD060115	6 x 115 mm	100 pcs.	pack
6121DSD060135	6 x 135 mm	100 pcs.	pack
6121DSD060155	6 x 155 mm	100 pcs.	pack
6121DSD060175	6 x 175 mm	100 pcs.	pack
6121DSD060195	6 x 195 mm	100 pcs.	pack
6121DSD060215	6 x 215 mm	100 pcs.	pack
6121DSD060235	6 x 235 mm	100 pcs.	pack
6121DSD060255	6 x 255 mm	100 pcs.	pack
6121DSD060275	6 x 275 mm	100 pcs.	pack
6121DSD060295	6 x 295 mm	100 pcs.	pack
6121DSD060315	6 x 315 mm	100 pcs.	pack
6121DSD060335	6 x 335 mm	100 pcs.	pack
6122STRSTEPS	Polystyrene caps (EPS) have to be ordered separately!	500 pcs.	pack

Only available in full packing units (packs)

The anchors need to be anchored in a sufficient depth in the substrate. The effective embedding depth of the insulation board anchors for different service categories is as follows:

Use category A–D ≥ 25 mm

A: Standard concrete and concrete facing layers, B: Bricks, solid bricks, concrete solid bricks and lightweight concrete solid bricks, C: Vertically perforated bricks, perforated calcium-silicate bricks and lightweight concrete hollow blocks, D: Lightweight aggregate concrete with open structure

Use category E ≥ 65 mm. E: Porous concrete (e.g. Ytong)

Note!

UV exposure from sunlight on unprotected anchor ≤ 6 weeks

best wood **screw-in anchor H35** for insulation boards

Screw Ø 6 mm with HP coating for permanent corrosion resistance to fasten insulation board WALL 140/180 and pre-rendered WALL 140/180 in timber frame constructions and solid wooden substrates. A fastening on mineral substrates should not be carried out. For the **pre-rendered WALL 140/180**, the screw-in plate has to be inserted by about the thickness of the render layer. This fastening system should only be used for board installations that are carried out as one single layer. Screw-in plate Ø 35 mm. Effective screw-in depth: min. 35 mm. Screw length = Thickness of insulation board + 20 mm

The pre-rendered WALL 140/180 is only available in the dimension of 60–160 mm.

Note the special processing guidelines for pre-rendered WALL 140/180.

Fastening system without ETICS approval! Currently in the ETICS approval process!

Note: Screw-in anchor H35 can only be used with an installation tool (see page 21/45).



Screw-in anchor H35
not pre-assembled

Item no.	Delivery form	PU	UP
6112DSH6/80	6 x 80 mm	100 pcs./pack	pack
6112DSH6/100	6 x 100 mm	100 pcs./pack	pack
6112DSH6/120	6 x 120 mm	100 pcs./pack	pack
6112DSH6/140	6 x 140 mm	100 pcs./pack	pack
6112DSH6/160	6 x 160 mm	100 pcs./pack	pack
6112DSH6/180	6 x 180 mm	100 pcs./pack	pack
6112DSH6/200	6 x 200 mm	100 pcs./pack	pack
6112DSH6/220	6 x 220 mm	100 pcs./pack	pack
Polystyrene caps (EPS) are already included in the packing unit!			

Only available in full packing units (packs)

best wood **spiral anchor** light attachments



Fastening solution for light attachments to ETICS facades; recommended load: max. 5 kg per fixing point; free of thermal bridges; a subsequent installation through the render layer is possible: pre-drill with an 8 mm drill trough the covering render, apply FDM under anchor plate and screw-in (TORX T40). Spiral anchor should be sealed to the rendered facade with FDM, afterwards the screw (4–5 mm) has to be screwed in and the attachment has to be fixed.



Item no.	PU	UP
6123SPIRALDÜBEL	10 pcs./pack	pack

Only available in full packing units (packs)

best wood **spiral anchor** stack pipe



For attachment of stack pipe clamps directly in the wood fiber insulation boards without thermal bridges, pre-drill with 13-15 mm. Pre-installed special threaded pin (Drive TX 25), ideal distance of 30 mm between stack pipe and wall. Internal thread Ø: M10, external thread Ø: M8, anchor length: 95 mm, recommended max. load 10 kg



Item no.	PU	UP
6123SPIRALDÜBELR	5 pcs./pack	pack

Only available in full packing units (packs)

best wood **FDM WALL**



Assembly adhesive for sealing butt joints of the 2nd sealing level for window sills and for attaching reveal boards, sealing wedges and sealing corners, and for sealing gaps in the wall insulation with a joint width of about 2–5 mm. The assembly adhesive can be rendered over. An air temperature and ambient temperature of $\geq +5^{\circ}$ is required for at least 24 hours during processing.



Item no.	Delivery form	Range	PU	UP
6170FDMWALL	310 ml cartridge with a content of 470 g	5 mm bead ~ 15 m	12 cartridges/carton	pc
		8 mm bead ~ 6 m	1 cartridge	pc

Vapor barriers and airtight sealing membranes

INTELLO

High-performance vapor barrier and airtight sealing membrane for insulation materials between structural timber elements. With humidity-variable s_d value.

Field of application

Can be used as a vapor check and airtightness membrane for all externally diffusion-open structures, e.g. with roof underlay (pro clima SOLITEX), softwood fiberboard or MDF board. For a high level of protection against moisture-induced failures in structurally challenging constructions such as diffusion-resistant flat/pitched roofs. Also suitable in extreme environments such as in high mountain regions.

Advantages

Maximum protection for the insulation. Ideal prevention against structural damage and mould, even in the event of unexpected moisture intrusion. Extremely high moisture-variable diffusion resistance in any climate spanning a very wide range of more than 100 x (s_d value: 0.25 m up to >25 m): High protection from condensation in winter climate. High back-diffusion capacity in summer (s_d value only 0.25 m). Lowest VOC rating in hazardous substance test.



07
DIN EN 13984



developed and produced by pro clima

Fleece	Polypropylene
Membrane	Polyethylene copolymer
Weight per unit area	85 ± 10 g/m ²
Thickness	0.25 ± 0.05 mm
s_d value humidity-variable	0.25 – >25 m
Temperature resistance	–40 °C to + 80 °C
Tensile strength longitudinal/transverse	130 N/5 cm / 105 N/5 cm

Item no.	Roll length	Roll width	Area	Roll weight
6101INTELLO150	50 m	1.50 m	75.0 m ²	7 kg

INTELLO PLUS

High-performance reinforced intelligent vapor check, suitable for all fibrous insulations.

Can also be used as a membrane in combination with air injected insulations.

Field of application

Can be used as a vapor check and airtightness membrane for all externally diffusion-open structures, e.g. with roof underlay (pro clima SOLITEX), softwood fiberboard or MDF board. For a high level of protection against moisture-induced failures in structurally challenging constructions such as diffusion-resistant flat/pitched roofs. Also suitable in extreme environments such as in high mountain regions.

Advantages

Maximum protection for the insulation; ideal prevention against structural damage and mould, even in the event of unexpected moisture intrusion; extremely high moisture-variable diffusion resistance in any climate spanning a very wide range of more than 100 x (s_d value: 0.25 m up to >25 m): high protection from condensation in winter climate; high back-diffusion capacity in summer (s_d value only 0.25 m); lowest VOC rating in hazardous substance test; **very low coefficient of expansion when combined with air injected insulation materials.**



07
DIN EN 13984



developed and produced by pro clima

Fleece	Polypropylene
Membrane	Polyethylene copolymer
Weight per unit area	110 ± 15 g/m ²
Reinforcement	Polypropylene non-woven fabric
Thickness	0.40 ± 0.10 mm
s_d value humidity-variable	0.25 – >25 m
Temperature resistance	–40 °C to + 80 °C
Tensile strength longitudinal/transverse	350 N/5 cm / 290 N/5 cm

Item no.	Roll length	Roll width	Area	Roll weight
6101INTELLOPLUS	50 m	1.50 m	75.0 m ²	9 kg

DA CONNECT

Vapor barrier and airtight sealing membrane for insulation materials on or outside the load-bearing structure.

Field of application

Can be used as a weatherproof vapor barrier and airtight sealing membrane on linings, e.g. under insulation materials under rafters.

Advantages

Provides protection against the influence of the weather during construction; water repellent and water resistant; safe to walk on; functions as a vapor barrier and airtight sealing layer.

DA connect: With 2 integrated self-adhesive zones on the longitudinal edges.



07
DIN EN 13984



developed and produced by pro clima

Protection and cover fleece	Polypropylene
Membrane	Polypropylene
Weight per unit area	130 ± 5 g/m ²
Thickness	0.45 ± 0.05 mm
s _d value	2.3 ± 0.25 m
Temperature resistance	-40 °C to +100 °C
Tensile strength longitudinal/transverse	230 N/5 cm / 200 N/5 cm

Item no.	Roll length	Roll width	Area	Roll weight
6101DACONNECT150	50 m	1.50 m	75.0 m ²	11 kg

DASAPLANO 0,01 CONNECT

Airtight sealing membrane for roof renovation from the outside; in case of an insulation with best wood TOP 140/160/180/220.

Field of application

3-ply airtightness membrane for external roof renovation when fully insulating the existing rafters. Lay over the rafters underneath an additional rafter insulation made from soft wood fiber sarking boards (best wood TOP).

Advantages

Easy positioning over the rafters and insulation; active moisture transport for dry and reliable thermal insulation systems; airtight and highly diffusion permeable; quick and safe bonding through integrated connect self-adhesive zones in the longitudinal direction of the membrane.



07
DIN EN 13984



developed and produced by pro clima

Protection and cover fleece	Polypropylene microfiber
Membrane	Monolithic polymer mixture
Weight per unit area	145 ± 5 g/m ²
Thickness	0.50 ± 0.05 mm
s _d value humidity-variable	0.01 m humidity-variable
Reaction to fire	E
Outdoor weather exposure	14 days
Water column	> 2,500 mm
Permeability	W1
Tensile strength longitudinal/transverse	270 N/5 cm / 200 N/5 cm
Temperature resistance	-40 °C to +100 °C
Temporary roofing according to ZVDH with < 10 °C	14 days 7 days

Item no.	Roll length	Roll width	Area	Roll weight
6101DASAPLANO0,01	50 m	1.50 m	75.0 m ²	11 kg

DASATOP

Moisture-variable refurbishment vapor barrier for "Sub-and-Top" installation from the outside.

Field of application

DASATOP can be applied in the rafters on the existing inner cladding as well as over rafters by carrying out a "Sub-and-Top" installation. The construction can be covered with diffusion-open materials, e.g. best wood TOP 140/160/180/220 after installing the thermal insulation.

Advantages

The refurbishment vapor barrier DASATOP is able to reduce the diffusion resistance variably until a minimum of 0.05 m. Therefore, the "Sub-and-Top" installation is possible. Under the thermal insulation, DASATOP has an s_d value of up to 2 m in winter climate. On the rafters, with influence of moisture, there is a reduction in the s_d value to 0.05 m. This low value is equivalent to the value of a diffusion-open underlay and keeps the rafters dry. The insulation and the rafters are perfectly protected against moisture.



07
DIN EN 13984



developed and produced by pro clima

Protection and cover fleece	Polypropylene
Membrane	Polyethylene copolymer
Weight per unit area	90 ± 5 g/m ²
Thickness	0.25 ± 0.05 mm
s_d value humidity-variable	0.05–2 m
Tensile strength longitudinal/transverse	195 N/5 cm / 105 N/5 cm
Temperature resistance	-40 °C to +80 °C
Outdoor weather exposure	4 weeks

Item no.	Roll length	Roll width	Area	Roll weight
6101DASATOP	50 m	1.50 m	75.0 m ²	7 kg

TESCON NAiDECK mono

One-sided adhesive nail sealing tape

Field of application

Can be used as nail sealing tape under the counter-battening on sloping roofs. Suitable as an accessory for making temporary roofing as defined by the product data sheets of ZVDH for underlays.

Advantages

Excellent sealing effect – penetrates deep into the texture of underlays; water-resistant; meets ZVDH requirements; reinforcing fabric for reinforcement; contains no bitumen.



developed and produced by pro clima

Material	Butyl rubber
Separating layer	Siliconized PE foil
Temperature resistance	Long-term -40 °C to +80 °C
Processing temperature	-10 °C to +35 °C

Item no.	Roll length	Roll width	Contents	KG / PU
6102TESCONNAIDECMONO	20 m	45 mm	12 rolls/carton	8 kg

TESCON NAiDECK mono patch

One-sided adhesive plaster as nail sealing tape

Field of application

One-sided nail sealing adhesive plaster under the counter-battening on sloping roofs. TESCON NAiDECK mono patch is suitable as an accessory for making temporary roofing as defined by the product data sheets of ZVDH for sarking and roof lining membranes and as accessories for the production of construction period seals in accordance with SIA 232/1 together with underlays.

Advantages

Extremely good sealing effect: The sealing compound is drawn into the hole when nailing / screwing down; easy pre-installation on the sarking/roof lining membranes or batten possible; material saving: Patch is only glued in the vicinity of the fastening material on the counter-batten; reliable during construction work: Suitable for temporary roofing / construction period sealing



developed and produced by pro clima

Material	Butyl rubber
Separating layer	Siliconized PE foil
Temperature resistance	Long-term -40 °C to +80 °C
Processing temperature	-10 °C to +35 °C

Item no.	Patch size	Contents	PU	KG / PU
6102TESCONNAIDECKMONOPATCH	82 x 62 mm	300 patches/roll	4 rolls/carton	9.3 kg

SOLITEX MENTO 3000 CONNECT

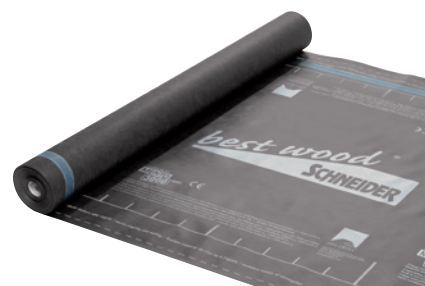
3-ply sarking and roof lining membrane, very high wear-resistance, high resistance to driving rain, very high thermal stability, with 2 integrated self-adhesive zones

Field of application

3-ply highly permeable roof lining and sarking membrane which is suitable for laying on boarding, MDF and fiberboard roof lining panels and insulating mats and boards.

Advantages

Highly permeable and at the same time, maximum resistance to driving rain, water column 10,000 mm. Optimum drying conditions for roof structures: non-porous TEEE functional membrane actively transports moisture outwards. Maximum ageing resistance and thermal stability thanks to the TEEE membrane. In order to protect the structure during the construction phase in the sense of the ZVDH (Zentralverband des Deutschen Dachdeckerhandwerks - Central Association of the German Roofing Trade) the SOLITEX MENTO 3000 sarking and roof lining membrane can be used as temporary covering for up to 4 months. In this case, the roof pitch must be at least 14°. In order to do this, the TESCON NAiDECK nail sealing tape, ORCON F joint adhesive and TESCON VANA system components must be used to glue the overlaps and connections. The connect version has two self-adhesive zones for reliable outer sealing. The regulations of the German Roofing Trade must be taken into consideration during installation and bonding.



developed and produced by pro clima

Protection and cover fleece	Polypropylene microfiber
Membrane	Monolithic TEEE
Thickness	0.45 ± 0.05 mm
s _d value humidity-variable	0.05 ± 0.02 m
Reaction to fire	E
Outdoor weather exposure	4 months
Water column	10000 mm
Surface weight beneath membrane	150 ± 5 g/m ²
Temperature resistance	-40 °C to +120 °C
Tensile strength longitudinal/transverse	300 ± 20 N/5 cm / 220 ± 20 N/5 cm

Item no.	Roll length	Roll width	Area	Roll weight
6101SOLITEXMENTO3000	50 m	1.50 m	75.0 m ²	11 kg

Bonding and sealing

TESCON VANA

Multi-purpose adhesive tape with fleece back

Field of application

Can be used to form a secure and permanent seal on overlaps between foil and fleece membranes (vapor barriers and airtight sealing membranes, roof underlays and wall membranes) and joints between them. It is also suitable for sealing butt joints between wood-based material panels.

Advantages

Long-lasting sealed bonds, indoors and outdoors; with pliable fleece backing; can be torn off by hand; for airtight bonds in accordance with DIN 4108-7, SIA 180 and ÖNorm B8110-2; high initial adhesiveness: extremely high final adhesion; waterproof adhesive.



developed and produced by pro clima

Backing	Special PP fleece
Separating layer	Siliconized paper
Temperature resistance	Long term -40 °C to +90 °C
Processing temperature	From -10 °C
Outdoor weather exposure	6 months

Item no.	Roll length	Roll width	Contents	KG / PU
6102TESCONVANA60	30 m	60 mm	20 rolls/carton	12 kg
			1 roll	0.6 kg
6102TESCONVANA150	30 m	150 mm	2 rolls	3 kg

best wood ADHESIVE TAPE

Professional adhesive tape, self-adhesive on one side

Field of application

For masking the element joints and penetrations of all elements that are coated with AQUA PROTECT. The ADHESIVE TAPE is also used for all masking work on the best wood SEALING LEVEL FOR WINDOW SILLS.

Advantages

Permanently sealed bonding; strong adhesion, UV stable and ageing resistant.



Backing	LDPEco film, white
Separating layer	Siliconized paper
Temperature resistance	-30 °C to + 100 °C
Processing temperature	+5 °C
Outdoor weather exposure	2 years UV-resistant

Item no.	Roll length	Roll width	Contents	KG / PU
6113KLEBEBAND60	30 m	60 mm	10 rolls/carton	8.5 kg
			1 roll	0.85 kg
6113KLEBEBAND100	30 m	100 mm	6 rolls/carton	8.5 kg
6113KLEBEBAND180	30 m	180 mm	4 rolls/carton	10.0 kg

TESCON PRIMER RP

Solvent-free primer, no drying required

Field of application

Adhesive primer for wood, wood fiberboards, masonry, rendering and concrete. For preparing or improving the surface before the application of TESCO VANA adhesive tape and ORCON F joint adhesive.

Advantages

No drying required – bonding is possible directly in the wet primer on absorbent substrates; deep penetration; strengthens the substrate; solvent-free; suitable for application with all pro clima adhesive tapes.



developed and produced by pro clima

Material	Acrylate copolymer, solvent free
Temperature resistance	-40 °C to +90 °C
Processing temperature	-10 °C to +45 °C
Storage	Store in a frost-free place

Item no.	Bottle	Contents per box	Coverage (with adhesive tape width of 60 mm)
6103TESCONPRIMER	1.0 l	6 bottles	approx. 75 m

TESCON sPRIMER

Sprayable primer, no drying time required, with rotating nozzle

Field of application

Adhesive primer for wood, wood fiber boards, masonry, ceilings walls and floor boards for subsequent bonding with pro clima adhesive tapes such as TESCON VANA.

Advantages

Spray on straight from the can, no primer contamination in the container; deep penetration, strengthens the substrate; adhesive tapes can be affixed to absorbent substrates without drying time; versatile: can be used on dry and slightly moist substrates; processing in frosty conditions also possible



developed and produced by pro clima

Material	Synthetic rubber
Temperature resistance	Long-term -25 °C to ~90 °C, short term to 100 °C (1h)
Processing temperature	-5 °C to +40 °C
Storage	Frost-free, cool and dry

Item no.	Can	Contents per box	Coverage (with adhesive tape width of 60 mm)
6103TESCONSPRIMER750	750 ml	6 cans	approx. 38 m

best wood FDM TOP

For bonding of vapor check and for sealing joints (dust-free and dry) in the roof insulation (best wood TOP 140/160/180/220), with joint widths of ≤ 5 mm. Even the smallest joints have to be closed with best wood FDM TOP before installing the counter batten.



Item no.	Delivery form	Range	PU	UP
6170FDMTOP	310 ml cartridge	5 mm bead ~ 15 m	20 pcs./carton	pc
		8 mm bead ~ 6 m	1 pieces	pc

ORCON F

Multi-purpose joint adhesive

Field of application

Long-lasting, elastic joint adhesive for internal and external application. For manufacturing air-tight connections on vapor barrier and airtight sealing membranes of all kinds, such as INTELLO, DB+, DA CONNECT, SOLITEX WA, SOLITEX MENTO 3000 as well as roof underlays and wall membranes on adjoining building components.

Advantages

Does not require a pressure lath; airtight bonds in accordance with DIN 4108-7, SIA 180 and ÖNorm B8110-2; permanently elastic whilst having exceptionally high strength and flexibility; enters deep into the substrate; suitable for frost resistant storage.



developed and produced by pro clima

Material:	Dispersion on a basis of acrylic acid copolymers; frost resistant ethanol, contains no plasticizers or halogenated compounds
Processing temperature:	-10 °C to +50 °C
Temperature resistance:	Long term -20 °C to +80 °C
Storage:	Above -20 °C, store in a cool and dry place

Item no.	Cartridge	Range	Contents	KG / PU
6103ORCONF	310 ml	5 mm bead ~ 15 m	20 cartridges/carton	7.5 kg
		8 mm bead ~ 6 m	1 cartridge	0.38 kg

Profiles

best wood wall profiles made from DUO beams industrial quality

Profile for curtain walls in combination with best wood wood fiber insulation boards
MULTITHERM 110/140, TOP 140, TOP 160, TOP 180 and TOP 220.

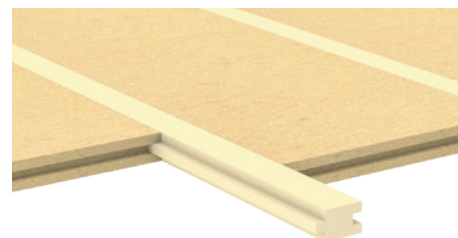


Item no.	Dimension	Length	Package
1505060100HF	60 mm thick, profile size 100 mm, cover size 75 mm	5.0 m	84 pieces
1505080100HF	80 mm thick, profile size 100 mm, cover size 75 mm	5.0 m	56 pieces

best wood floor profiles

Foundation lath for fastening floor structures in combination with best wood wood fiber insulation board **FLOOR 160.**

The floor profile only fits into the tongue and groove connection of the FLOOR 160.

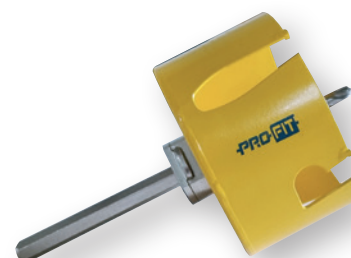


Item no.	Dimension	Length
6190FiFL2/60/35	35 mm thick, profile size 60 mm, cover size 50 mm	2.0 m

Tools

Keyhole saw LH for air injected wood fiber insulation in board materials

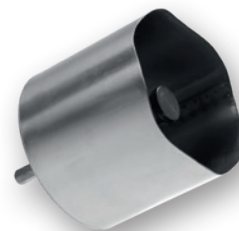
Drilling diameter 108/121 mm, taper shank: Ø 13 mm, cutting depth: approx. 58 mm
Powerful keyhole saw for the professional production of injection openings in board materials. Drill bit made from high-quality steel with carbide cutting edges. The drill core cannot be used to close off the injection opening.
Suitable materials: OSB and DWD boards, all wood-based panels, soft wood fiber materials, plasterboard and cement-bound fiber boards.



Item no.		PU	UP
6115LS108	Diameter 108 mm	1	pc
6115LS121	Diameter 121 mm	1	pc

best wood keyhole saw (ED) with ejector for air injected wood fiber insulation

Drilling diameter: 106.5/120 mm, recommended speed: 400–600 rpm
Taper shank: Ø 13 mm, for board thicknesses of 60 and 80 mm.
The drill core is used to close off the injection opening.
The tool can also be easily re-sharpened.
Only suitable for drilling in best wood wood fiber insulation boards.



Item no.		PU	UP
6115LS106,5	Diameter 106.5 mm	1	pc
6115LS120	Diameter 120 mm	1	pcs.

best wood **cork plug**

Diameter: 106/120 mm, thickness: 25 mm, design: conical

Tapered sealing cork for simple and time-saving closure of injection openings in hard panelling materials such as OSB boards or fiber-reinforced plasterboard. Not suitable for closing off injection openings in best wood SCHNEIDER ETICS. When the tapered cork plugs are inserted into an OSB board that is at least 15 mm thick, the closure can be regarded as airtight.



Item no.		PU	UP
6117KSVK106	Diameter 106 mm	50/carton	pc
6117KSVK120	Diameter 120 mm	50/carton	pc

best wood **keyhole saw (KV)** for structural connections

Drilling diameter: 40 mm, recommended speed: 800–1200 rpm

Taper shank: Ø 10 mm, for board thicknesses of 40 to 120 mm.

Keyhole saw for making openings at wood fiber board level for screwing together the underlying wood structure.

The drill core is used for closure afterwards.

The tool can also be easily re-sharpened.

Only suitable for drilling in best wood wood fiber insulation boards.



Item no.		PU	UP
6115LSKV		1	pc

best wood **keyhole saw (VD)** for countersunk dowel installation

Drilling diameter: 60 mm, recommended speed: 400–600 rpm

Taper shank: Ø 13 mm. Keyhole saw for making openings in wood fiber insulation boards for countersunk dowel installation (Ejotherm STR H insulating render screw for insulation boards and Ejotherm STR U 2G screw-in anchor for insulation boards). The drill core is used for closing the opening after installing the dowel. The tool can also be easily re-sharpened. Only suitable for drilling in best wood wood fiber insulation boards.



Replacement drill bit

Item no.		PU	UP
6115LSLT		1	pc
6115BOHRKRONELT	Replacement drill bit	1	pc

best wood **mounting tool H**

Two-stage mounting tool to fasten the best wood screw-in anchor H35

The Torx insert TX20 is not included.



Item no.		PU	UP
6116MT		1	pc

On-roof insulation fastening material

HECO-TOPIX® plus for on-roof insulation and curtain wall facades

Countersunk head screw with partial thread
European Technical Approval ETA-19/0553



Item no.	Delivery form	PU	UP
6110SK8/140	8 x 140 mm	100 pcs.	pack
6110SK8/160	8 x 160 mm	100 pcs.	pack
6110SK8/180	8 x 180 mm	100 pcs.	pack
6110SK8/200	8 x 200 mm	100 pcs.	pack
6110SK8/220	8 x 220 mm	50 pcs.	pack
6110SK8/240	8 x 240 mm	50 pcs.	pack
6110SK8/260	8 x 260 mm	50 pcs.	pack
6110SK8/280	8 x 280 mm	50 pcs.	pack
6110SK8/300	8 x 300 mm	50 pcs.	pack
6110SK8/320	8 x 320 mm	50 pcs.	pack
6110SK8/340	8 x 340 mm	50 pcs.	pack
6110SK8/360	8 x 360 mm	50 pcs.	pack

Note!

Fastening of the counter battens

You have the possibility to calculate the screws required for fastening the on-roof insulation by yourself, using the free HECO software program. Alternatively, you can complete the fax information form and let HECO calculate the screws. **The download link for the calculation program and the fax information form can be found at www.schneider-holz.com**



HECO-TOPIX® plus Therm for on-roof insulation and curtain wall facades

Countersunk head screw with milling ribs
European Technical Approval ETA-19/0553



Advantages with regard to noise transmission and significant reduction in screw quantities in comparison to conventional systems

Item no.	Delivery form	PU	UP
6111UKG8/160	8 x 160 mm	50 pcs.	pack
6111UKG8/200	8 x 200 mm	50 pcs.	pack
6111UKG8/240	8 x 240 mm	50 pcs.	pack
6111UKG8/280	8 x 280 mm	50 pcs.	pack
6111UKG8/300	8 x 300 mm	50 pcs.	pack
6111UKG8/330	8 x 330 mm	50 pcs.	pack
6111UKG8/360	8 x 360 mm	50 pcs.	pack
6111UKG8/400	8 x 400 mm	50 pcs.	pack
6111UKG8/450	8 x 450 mm	50 pcs.	pack
6111UKG8/500	8 x 500 mm	50 pcs.	pack

Only available in full packing units (packs)
Other lengths available on request

Fastening instructions for best wood TOP on-roof insulation

Maximum rafter distances to fasten TOP on-roof insulation

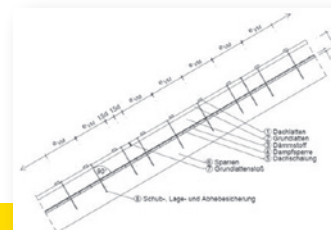
best wood on-roof insulation		TOP 140	TOP 160	TOP 180	TOP 220
Maximum rafter distance [mm]	Minimum board length [mm]	Board thickness of the on-roof insulation [mm]			
≤ 750	2000	≥ 80	≥ 60	≥ 35	≥ 22
≤ 850	2000	≥ 100	≥ 80	≥ 50	≥ 35
≤ 1100	2500	≥ 140*	≥ 120*	≥ 80	≥ 50
≤ 1250	2500	≥ 200*	≥ 160*	≥ 100*	X

* Order-based production

Sketch 22 mm – 60 mm

Fixing of the on-roof insulation with nail-screws or clips

Furthermore, you can receive a calculation from ITW for ring nails, nail screws or clips by using the questionnaire fax. Please note that the calculation of ITW is only valid for ITW fixing elements. Remarks and boundary conditions in the result printout have to be considered.



The download link for the ITW calculation service can be found at www.schneider-holz.com.



best wood **Cover**

NEW!

The best wood cover made of coated PP fabric provides reliable weather protection for wood fibre insulation materials during outdoor storage. The covers are reusable.



Item no.	Description	Size	PU	UP
6185ABDECKHAUBE205	Cover for wood fibre pallets	125 x 205 x 122 cm	1	pc
6185ABDECKHAUBE255	Cover for wood fibre pallets	125 x 255 x 125 cm	1	pc.



MESSKIRCH



EBERHARDZELL



MÄRSTETTEN

Eberhardzell site

best wood SCHNEIDER GmbH
Kappel 28 | D-88436 Eberhardzell
Phone +49 (0)7355 9320-0
Fax +49 (0)7355 9320-300

Subsidiary Meßkirch

best wood SCHNEIDER GmbH
Industriepark 16 | D-88605 Meßkirch
Phone +49 (0)7355 9320-8000
Fax +49 (0)7355 9320-300

Subsidiary Switzerland

best wood SCHNEIDER GmbH
Weinfelderstrasse 29A | CH-8560 Märstetten
Phone +41 (0)71 918 79 79
Fax +41 (0)71 918 79 78

Good for nature, good for us all. Tested & certified.

The Schneider company group is a regionally operating family-run company with headquarter in Eberhardzell. At the highest technical level, we produce all supporting wood components and wood fiber insulation boards for modern wood and passive house construction and pellets for ecological heating.

From round wood to finished product including energy requirement, we implement everything in a closed raw material cycle in our production facilities in Southern Germany. best wood Schneider realises energy-efficient production in accordance with DIN ISO 50001 when doing this. The wood raw material is utilised 100 % to the last chip.

